

Farm Bureau donating groceries to the Medford Food Bank; Garfield County Farm Bureau purchased \$100 in food items for the Horn of Plenty Food Bank in Enid; Rogers County Farm Bureau made a \$200 donation to the domestic abuse shelter in Claremore; Major County Farm Bureau purchased groceries for needy families through the Department of Human Services; Noble County Farm Bureau gave \$100 worth of groceries to the Mission of Hope Food Bank in Perry; and Muskogee County Farm Bureau donated food to the Ark of Faith Foundation in Muskogee.

It marked the ninth consecutive year FBW leaders celebrated Food Check-Out Day.

OKLAHOMA MARKETBASKET PRICES AT-A-GLANCE

| Grocery Item & Pricing Quantity | First Quarter 2005 | First Quarter 2004 |
|---------------------------------|--------------------|--------------------|
| Ground Chuck/lb. | \$2.50 | \$2.37 |
| Sirloin Tip Roast/lb. | \$2.93 | \$3.10 |
| Center Cut Pork Chops/lb. | \$2.73 | \$3.02 |
| Bacon/lb. | \$3.13 | \$2.31 |
| Whole Fryers/lb. | \$0.88 | \$0.83 |
| Grade A Large Eggs/doz. | \$0.85 | \$1.31 |
| Whole Milk/gal. | \$2.60 | \$2.68 |
| Mild Cheddar Cheese/lb. | \$3.23 | \$3.27 |
| Red Delicious Apples/lb. | \$0.68 | \$1.01 |
| Russet Potatoes/5-lb. bag | \$1.53 | \$1.55 |
| Cherrios, 10-oz. box | \$2.86 | \$2.39 |
| All Purpose Flour, 5-lb. bag | \$0.98 | \$1.13 |
| White Bread, 20-oz. loaf | \$1.23 | \$1.23 |
| Mazola Oil, 32-oz. | \$2.32 | \$2.28 |
| Crisco Oil, 32-oz. | \$2.15 | \$2.39 |
| Kraft Mayonnaise, 32-oz. | \$2.55 | \$3.21 |
| TOTAL | \$33.15 | \$34.08 |

The Oklahoma Marketbasket Survey, conducted by members of the OFB Women's Committee at sites across the state in late February, saw the total price decline. The 2005 first quarter average was almost \$1 lower than the 2004 first quarter average. Grocery prices in Oklahoma are about 15 percent lower than the national average.

Safety Services transition



Justin Grego has been selected to serve as the director of the Oklahoma Farm Bureau Safety Services. He succeeds the organization's longtime Safety Director Larry Pittser, who retired in February after more than 31 years of service. Grego joined the OFB staff in March 2001. The 25-year-old is a 1997 graduate of Wilburton High School and earned a bachelor's degree animal science from Oklahoma State University in 2000. Grego and his wife, Kelly, reside in Seminole County. Kelly is an agricultural education instructor with Checotah Public Schools.



Larry Pittser, right, accepts a plaque from Oklahoma Farm Bureau President Steve Kouplen recognizing his 31-plus years of service to the organization during the Jan. 19 board of directors meeting. Pittser, the longtime director of Safety Services, retired Feb. 27. He began his career with Farm Bureau on Sept. 25, 1973. The Kids Fire Safety Trailer program was Pittser's brainchild, and has reached out to hundreds of thousands of youngsters in only five years of operation. Larry, a native of Drumright, is a 1970 graduate of Oklahoma State University. Larry and his wife, Linda, make their home in Oklahoma City.

Kay County's Dyer is named company's Top All Around Agent

Kay County Farm Bureau agent Darren Dyer was named Oklahoma Farm Bureau Mutual Insurance Company's Top All Around Agent at the Feb. 23 Winner's Circle meeting in Oklahoma City.

It was the first time in his career with the largest Oklahoma-based property and casualty insurance company for Dyer to earn the recognition as the premier agent in the 200-plus-member agency force.

Dyer, who works out of the Kay County Farm Bureau satellite office in Ponca City, has never had another full time job outside of Farm Bureau Insurance.

"I love my job, and I'm not just blowing smoke," said Dyer. "People here will tell you that."

The Top All Around Agent Award is presented annually to Farm Bureau

Insurance's most prolific agent. Dyer was among the company's top producers in all lines.

"We are extremely proud of Darren," said Farm Bureau Agency Vice President Bill Downs. "He has consistently been among our top agents. For an agent to do it year after year is quite an accomplishment since many burn out after a while. But Darren just keeps on going and going."

Dyer began his insurance career with the company after graduating from Oklahoma State University. He started as an agent in Noble County on Sept. 1, 1991, and was in Perry for six months before transferring to the Blackwell Farm Bureau office, where he spent nearly five years.

Dyer served as agency manager for the Noble and Kay County Farm Bureau Insurance

force for about five years, before deciding to return as a producing agent in 2001.

"It seems as if I've been around Farm Bureau for ever," he said. His father, Larry, is a veteran with the insurance company and now is one of only eight managers for the entire Farm Bureau agency force.

Dyer singled out his father, his manager Larry Hays and his customer service

representative Mariah Laughlin as being instrumental in his success.

"If it weren't for them, I would not have gotten this accomplished. They have really helped me a lot, because I had the worst personal year of my life last year. But I went to work. That made me have the best business life in 2004."

Dyer is an active member of his

community, coaching youth sports as well as being heavily involved with the Ambucus service organization.

First runner up for All Around Agent was Mark Wolf of Canadian County Farm Bureau. Gary Winters, a Custer County Farm Bureau agent, was second runner up followed by Custer County Agent Steve Weichel and Payne County Agent Ralph Ellis.



Darren Dyer was named Top All Around Agent for 2004 at the OFB Mutual Insurance Company Winner's Circle Meeting Feb. 23 in Oklahoma City. Chisholm Trail Agency Manager Larry Hays, right, presented the award to the Kay County Farm Bureau agent.



WESTCHESTER
Foundation Repair
Seamless Siding
Window Replacement

800-833-7437
www.westchesterfoundation.com

Family Owned & Operated Since 1977
Bonded & Insured for Your Protection

Oklahoma's Only Seamless Siding Dealer

We bring the factory to YOU!

Bulldog tough seamless siding is tougher than nails.....

- never needs painting
- is Mildew Resistant
- is Fire Proof
- is the most energy efficient siding available
- will not rust, rot, peel, chip, blister, curl or wrinkle

Ask about our Lifetime Warranty
Super Special Financing Available
References available upon request
Free estimates to Homeowners

DETOUR DEALS



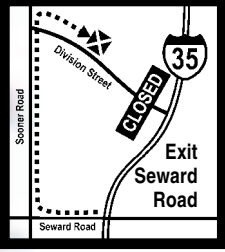


JOHN VANCE

AUTO GROUP

"Where it's comfortable to buy a car."

At Vance Auto Group we make buying the new or used car or truck of your dreams an enjoyable experience. We have many customers who return again and again because they say we make them comfortable while shopping for a vehicle for their home, farm or business.



As members and employees of Farm Bureau we want to offer you one of our incredible "Detour Deals". Just come to John Vance Auto Group (see map in this ad) and ask for the incredible "Detour Deal". Not only will you get the best price around, you'll also discover what many other Oklahoma car and truck buyers have found. That it's a comfortable experience to purchase a car or truck from John Vance Auto Group.

5322 South Division Street • Guthrie • 1-800-375-4471

www.vanceautogroup.com



Dewey County member wins Farmer Idea Award

A loading chute that attaches to livestock trucks and quickly converts from ground level to different loading dock heights earned LeRoy Stotts of Seiling the grand prize in the Farmer Idea Exchange competition at the American Farm Bureau Federation annual meeting in Charlotte, N.C., Jan. 9-12.



Tammy and LeRoy Stotts of Seiling, left, are congratulated by Gene Hemphill with New Holland, Inc., right, on being named the grand prize winners in the Farmer Idea Exchange contest during the AFBF convention in Charlotte, N.C.

Stotts won a year's use of a New Holland TV-140 Bidirectional tractor. This was the 17th year of the annual contest, and the 16th year that New Holland provided free use of a tractor to the grand prize winner.

Stotts' loading chute was selected because of its one-size-fits-all efficiency for loading and unloading livestock almost anywhere. It eliminates the need for pull-behind vehicles, including trailers and loading chutes, because it attaches to most livestock transports, straight trucks and pot-belly trailers.

Three other top awards of \$250 were selected by the 15 category winners and presented by AFBF during the award ceremonies held Jan. 9.

The "Most Innovative" idea award went to Alfalfa County Farm Bureau member Robert Barnett. He invented what he calls "Barn On the Move," which is a 32' x 50' roof on wheels that can be moved behind a pickup truck from spot to spot for various uses. The roof can be easily elevated for use as a cover for hay bales or to provide shade and shelter for livestock.

In total, 30 entries in eight categories were entered in the AFBF Farmer Idea Exchange.



WESTCHESTER
Foundation Repair
Seamless Siding
Window Replacement

800-833-7437
www.westchesterfoundation.com
Family Owned & Operated Since 1977
Bonded & Insured for Your Protection

Bulldog Tough Vinyl Windows

Highest Quality Window Available Anywhere
Freedom from Maintenance plus added Safety & Security!

- Bay Windows • Patio Doors • Sunrooms
- Super Energy Efficient
- Smooth operating for venting & cleaning
- 2 Security locks for double protection
- Frost-guard™ "warm edge technology"

Lifetime Warranty • Super Special Financing Available
References available upon request
Free estimates to Homeowners

OFB adds 'Commodities' page to its Web site

Oklahoma Farm Bureau has launched the newest addition to its Web site, the "Commodities" page. The page was created in an effort to provide visitors with specific information on commodities produced throughout the state.

The Web page highlights Oklahoma's top commodities, including beef, wheat, poultry, cotton, swine, peanuts and equine. Visitors will find interesting 000500050 facts about each commodity as well as its state and national rankings, and the latest cash receipts.

KIS Futures will provide weekly market outlooks for most of these commodities. The



If you need farm credit, you need Farm Credit.



Farm Credit
of
East Central Oklahoma

www.farmcreditecok.com • 1.866.AgLender

Ardmore • Broken Arrow • Durant • Idabel • Kingfisher • McAlester
Muskogee • Pauls Valley • Poteau • Stillwater • Vinita

markets will be updated each Monday morning with the week's newest activity. In addition, visitors to the "Commodities" page will find a link to the Ag Weather site, which provides farmers and ranchers with valuable information designed to aid in their decision-making processes.

For those with specific questions regarding state commodities, a contact list containing the names and email addresses of Oklahoma Farm Bureau's Advisory Committee chairmen and staff representatives has been added to the site. Visitors may contact these representatives with their questions and/or comments.

If visitors are unable to find the information they are looking for through OFB's "Commodities" page, a list of links to several state and national commodity organizations can be found on the site.

A link to The Sale Ring, OFB's online classifieds site, also is available from the "Commodities" page. Here, visitors can buy, sell or trade goods and services online. Ad postings are free for Farm Bureau members, but anyone may view the contents.

To view the "Commodities" page, visit www.okfarmbureau.org and click on the "Commodities" button on the left column of the home page.

FARM BUREAU BANK
Business Line of Credit
Giving you Strong Financial Management

5.50% APR*
 Credit Line up to **\$100,000**

Operating a business requires a flexible line of credit. A Business Line of Credit from Farm Bureau Bank will provide the financial flexibility for expansion, emergencies, and every day needs.

- No annual fee
- Pay only when the line is accessed.
- Easy access with a Visa® Business Card, checks, and phone transfers

1-800-492-FARM (3276)
www.farmbureaubank.com
 (Refer to promotion code 2004A)

*Nominal Percentage Rate (APR). Annual Percentage Rate is based on the U.S. Prime Rate plus a Margin. The Margin may range from 0.00% to 2.00%. The APR is from 5.50% to 15.48% as of 3/31/05. Actual rates and terms may vary based on the qualifications of the business and the credit history of the business and guarantor. The Business Line of Credit is available to qualified businesses with the personal guarantee of a principal owner, officer or partner. Farm Bureau Bank FSB is a service to member FBSB that provides services to Farm Bureau Members. Services are not available in IL, WI, MI, IN, GA, or NJ and may not be available in some counties or portions. Farm Bureau, FB, and the FB National Logo are registered service marks owned by the American Farm Bureau Federation and are used under license by FB BankCorp and its subsidiaries including Farm Bureau Bank FSB. FB BankCorp is an independent entity and the AFBF does not own, is not owned by, and is not under common ownership with FB BankCorp or its affiliated entities.

MCCOY'S BUILDING SUPPLY CENTERS
FARM & RANCH OUTFITTERS
 Fencing • Metal Roofing • Ranch Building Materials • Gates • Posts
 Prices good May, 2005

Priefert® Portable Corral System
 Our corral system features durable, baked-on powder coating in a Leather Brown finish that's fade and corrosion resistant, 82" high and uses 1 5/8" tubular steel.

40' Round Pen 1,029⁹⁹
 • J-leg footing minimizes sinking and maximizes corral height
 • Chain connectors
 • 10 Panels
 • 1 Walk gate
 (0000070)

12' Corral Panels 85⁹⁹
 • J-leg footing minimizes sinking and maximizes corral height
 • Chain-latch connection
 • Horse safe
 (0000060)

6' Ride Through Bow Gate 226⁹⁹
 • Easy access latch
 • 6' x 9'
 (0000090)

Walk Through Bow Gate 195⁹⁹
 • 4' Walk gate w/0' panel
 • J-leg footing minimizes sinking and maximizes corral height
 (0000080)

Tuf-Mac Barbless Wire
 OKLAHOMA STEEL & WIRE CO.
 • Class I
 • 12 1/2 Gauge
 • Protect valuable animals from injury
 (000430) **41⁵⁹**

Max-Tight Horse Fence
 OKLAHOMA STEEL & WIRE CO.
 • 100' Roll
 • 2"x 4" Spacing
 • 12 1/2 Gauge
 • Horse safe knot
 48" (0004180) **113⁹⁹**
 60" (0004180) **147⁹⁹**

Sheep & Goat Wire
 OKLAHOMA STEEL & WIRE CO.
 • Class I
 • 330' roll
 • 12 1/2 Gauge
 • 48" High
 • 13 Horizontal wires with 4" stay openings
 (0004120) **209⁹⁹**

YF&R looks for good young people

Oklahoma Farm Bureau needs you! If you are between the ages of 18 and 35, involved in agriculture and want to help make a difference in the future of our industry, the Young Farmer & Rancher program is for you.

The YF&R program offers leadership development opportunities through county, state and national committees.

Statewide, YF&R members are big supporters of Oklahoma youth. The state YF&R Committee sponsors a speech contest for 4-H and FFA participants and helps with state livestock judging contests.

Additional opportunities to network with other young farmers take place at two conferences held each year – a winter

conference in February and a summer conference in July. These conferences balance learning, leadership development, family time and fun at great locations across the state.

Leadership development through YF&R has paid dividends in our state and organization. The YF&R program has graduated several outstanding leaders in this state, including the Speaker of the House of Representatives and several members of the State Board of Agriculture, Regents of Higher Education and the A&M Board of Regents. Numerous Farm Bureau leaders owe many of their skills to YF&R involvement.

YF&R also provides incentives for growth and development through competitions. The YF&R Excellence in Agriculture Award is for members who do not derive a majority of their income from an owned agricultural production enterprise, yet are actively involved in the industry. The YF&R Discussion Meet helps develop committee problem solving skills through a cooperative discussion. And the YF&R Achievement Award rewards those young producers who have excelled in leadership and shown growth in their operation. Winners of these awards receive prizes including use of a Dodge vehicle and Kubota tractor, an ATV from Farm Credit, and other incentives.

County leaders, YF&R needs your help. Counties are encouraged to take on the challenge of YF&R recruitment. Each county is urged to find one or more interested person or couple and determine how those people would like to become involved. A great beginning would be to send them to the YF&R Summer Conference, which will be held July 22-24 in Alva.

For more information on how to become involved with the YF&R program, contact your county Farm Bureau office or OFB YF&R Coordinator Marcia Irvin at 405-523-2405 or mirvin@okfb.org.

Choosing the IRA that is Right for You

Deciding which type of Individual Retirement Account (IRA) is right for you is one of the many important decisions to be made along the road to retirement.

Do you want a current tax deduction or tax-

**DOES YOUR BASEMENT
or CELLAR LEAK?
NO EXCAVATING
CALL THE OLD CELLAR MAN NOW!
1-800-215-0537**

Deep Discount Rates for Institutions and Large Traders



Future & Options Strategists
www.kisok.com
EAST WHARF PLAZA
9825 LAKE HEFNER PIKE, SUITE 101
OKLAHOMA CITY, OK 73120

KURTIS WARD, J.D.
PRESIDENT

KWARD@KISOK.COM
WWW.KISOK.COM

OKC (405) 748-6565
TOLL FREE (866) 748-6565
FAX (405) 751-1245
MOBILE (405) 210-3969



WESTCHESTER
Foundation
Repair

800-833-7437
www.westchesterfoundation.com

Family Owned & Operated Since 1977
Bonded & Insured for Your Protection

We Save You Time & Money The System That Works Residential & Commercial

- No stress on your surface structure during installation
- No site preparation
- One day service on most homes
- Foundation repair
- Wood floor and slab leveling
- New construction piers
- French drains
- Retaining and basement walls

Ask about our Transferable Lifetime Plus Warranty
90 Days Same As Cash!
References available upon request
Free estimates to Homeowners

free withdrawals? Does your income qualify you to deduct your contributions? Does your income level prohibit you from contributing to a Roth IRA? Are you a participant in an employer-sponsored retirement plan? These are just a few of the questions you will need to answer when selecting the type of retirement account that is right for you.

When it comes to IRAs, the choices are a traditional IRA or a Roth IRA. These two options share some common characteristics. First, you can fund either one with almost any investment that you choose, with the one exception of life insurance. Second, for 2005, you may contribute up to \$4,000 per year to either IRA, or \$4,500 if you are at least 50 years old. Individuals may fund both a traditional and a Roth IRA in the same year, as long as the total contribution to both accounts is within the \$4,000 or \$4,500 annual limits.

While these two accounts have some similarities, they also have characteristics that are unique. Most notably, Roth IRA contributions are made with after-tax income and they can grow tax-free. Withdrawals from Roth IRAs are not taxed when withdrawn for qualified reasons, which include a first-time home purchase, disability, medical expenses and any withdrawals taken after age 59 1/2, as long as the account has been open for at least five years.

Thanks Friend Fire Department



We always appreciate the business of Oklahoma volunteer fire departments. We are happy to help them out a little with more protection and a discount.

EASLEY Grill Guards & CPL Toolboxes



OSBORN

PICK-UP ACCESSORIES
405-381-4491
Tuttle, Oklahoma
www.osbornpickup.com



HERITAGE
BUILDING SYSTEMS®
Established 1979

35' x 45' x 10' UBC 97 CODE



12# live - 20# snow -
80 mph wind \$5,995

12# live - 20# snow -
110 mph wind \$6,095

30# snow -
80 mph wind \$6,195

40# snow -
80 mph wind \$6,395



Crestwood Home 1
\$56,618

www.heritagebuildings.com

We can fabricate metal buildings in accordance to various codes. Don't be misled by buildings priced to the wrong code. Call Heritage for the RIGHT PRICE.

1.800.643.5555

ATTENTION: DENTURE SUFFERERS

**If You or Someone You Know
Wears Dentures. . .**

Then don't even think about going another day as a misinformed victim who wears uncomfortable dentures that move around, pop up or fly out!

If you want to eat your favorite foods again, and never fear or worry when in public ever again. Then you must be aware of the **FREE REPORT** That Reveals, "How To Stop Being A Victim To Wearing Those Uncomfortable And Irritating Dentures!

To get this insider information, you must call **Toll Free, 24 hour, FREE RECORDED MESSAGE at:**
1-866-802-4516

This Report is Free and so is this call!
Please call right now while this is fresh on your mind!

Peace of Mind



A home with a monitored security system is 600 percent less likely to be burglarized than a non-protected home.

Free Installation!

Right now only Oklahoma Farm Bureau members can receive a Vista 15 Home Security System installed at no charge. System includes master control panel, two door sensors, motion detector, siren, yard sign and full service warranty. Monitoring is required. The fee is \$24.95 per month.

Plus receive a \$200 Rebate!

We also offer complete video management solutions for both residential & commercial applications.





866-321-4177

YOUR TOTAL SECURITY CENTER

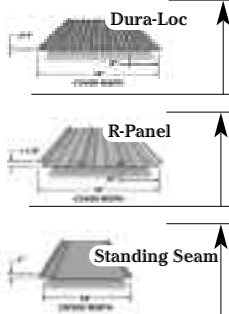
All Around Service



All Around Oklahoma

METAL PRODUCTS

Three Profiles of Sheet Metal Cut to Length
No. 1, 26 ga. 25yr. Warranty
 11 Colors. Call For Pricing



Carpports
 Protect Your Vehicle With
 an Indaco Metals
 Flat Carport

RESIDENTIAL

Home Roofing
 Systems



(BOCA & IBC Approved)

COMMERCIAL

Engineered Metal
 Building Kits, 20 X 20
 to 60 X 100



AGRICULTURAL

New From Indaco Metals! Complete Ridged Frame Bolt Together I Beam Packages, Delivered to your job site.

- Carports • RV Covers • Patio Covers
- Red Primed Structural Steel, C Purling, Tubing, Trusses • Fully Stocked Trim Department, Prepared to make Your Custom Trim

Engineered Metal Building Kits
 No. 1, 26 ga. 25yr. Warranty
 Many Sizes, Call for Pricing

Monday Thru Friday 8:00 to 5:00

405-273-9200 • Toll Free: 877-300-7334

www.indacometals.com • 3 American Way, Shawnee, OK

90 DAYS



Contributions to a traditional IRA may be tax-deductible (subject to certain income limits) and taxes are paid when the money is withdrawn. A penalty tax of 10 percent applies in certain situations, most notably before age 59 1/2. Contributions grow tax-deferred until withdrawn, at which time distributions may be taxed at your current income-tax rate, which may be lower in retirement than during your working years. Distributions from a traditional IRA must begin by age 70 1/2, while Roth IRAs do not require distributions by a certain age.

Another point to consider when deciding between Roth and traditional IRAs is whether you are an active participant in an employer-sponsored retirement plan, such as a 401(k). If you are an active participant, contributions to a traditional IRA may not be fully deductible on your tax return, depending on income levels. Further, since taxpayers with incomes that exceed certain limitations are not eligible to contribute to a Roth IRA, these taxpayers may find the traditional IRA a good choice for their retirement planning.

So, which IRA is right for you? As is often the case with investments, there is no quick and easy answer. If the idea of a current tax deduction and allowing the contributions to grow tax-deferred until retirement - when you may be in a lower tax bracket - is appealing, then the traditional IRA may be a good choice. If the idea of having income in retirement that is tax-free with no minimum required distribution date seems practical, than a Roth IRA may make more sense for you.

IRAs, whether Roth or traditional, may be one of the best ways to save for retirement. The benefits of investing in these vehicles are almost unmatched anywhere.

For more information on IRAs and for help in determining which IRA may be right for you, contact your local Farm Bureau Financial Services registered representative.

Farm Bureau Financial Services is a multi-state insurance and investments organization based in West Des Moines, Iowa. Through an exclusive agency force the affiliated companies underwrite, market and distribute a broad range of financial services products. For more information about products and services, call your local Farm Bureau office or log on to fbfs.com.

MAY MEMBER'S ONLY COUPON!

VanSickle

17⁸⁸

**1 Gallon
 Equipment
 Enamel**

Choose from Case IH
 Red, John Deere Green,
 Ford New Holland Blue,
 and more. 758-



Sale Price Expires
 May 31st.
 Limit 4 Gallons

To Receive
FARM BUREAU Only
 Sale Prices, You Must Show
 Atwoods Cashier a Current
 Membership Card
 Prior to Sale.

\$21
**1 Gallon
 Transport
 Yellow**
 758-

ENID, WOODWARD
 ELK CITY, CLINTON
 SHAWNEE, SAPULPA
 STILLWATER,
 SAND SPRINGS

ATWOODS

CLAREMORE, POTEAU,
 BARTLESVILLE, ALTUS,
 McALESTER, LAWTON,
 OWASSO, NORMAN,
 BROKEN ARROW

Country Classifieds

AUTOMOTIVE

Collectable '83 Subaru Brat (4x4 PU), \$2,200 OBO; 6,000-pound hydraulic lift gate on '79 Ford 2-ton box truck, \$3,200 OBO. 918-823-4262.

'80s Ford Bronco 4x4s. 918-543-2632.

'55 Chevy 1-ton 6-cylinder 4-speed with original stake side bed, running when parked under carport, \$1,175. 580-662-2081.

'89 Dodge Explorer RV van, contains everything but generator, excellent condition inside and out, by appointment only, \$9,500. 918-652-7248.

'03 white Chevy Z71, 51K, leather, loaded, OnStar, tow package, won't last long, \$22,900. 918-693-9889.

'65 Oldsmobile station wagon, motor rebuild, body clean, needs paint, 1 owner. Write P.O.B. 424, Guymon 73942, I'll write you back.

'79 CJ5 Jeep Renegade, V8, 29,800 miles, hard/soft tops, custom wheels, \$10,000. 580-357-1660, 585-2362.

'72 Ford Galaxie 500 Classic, all original show room quality, very nice, \$3,000. 405-275-0378.

'94 Ford F350 4x4, 5-speed 460 w/Dew Eze bed, heavy grill guard, very good truck, \$9,500. 918-623-2036.

Classic '59 Chevy Impala, sapphire blue and white, 35K, like new, 1-owner, as is, where is. 417-624-2512.

'79 Buick LaSabre 4-door, white top, blue bottom with blue cloth interior, power windows and locks, 25K actual miles, 2 owners, runs great. 580-310-0096.

Must sell due to illness '93 Dodge van, great shape, 4 new tires, new windshield, \$3,995 OBO. 405-382-2403.

'49 classic car, yellow Willys Jeepster, has black top, standard on column, some engine work needed. 580-332-7922.

'65 Chevy Impala convertible, no motor/trans., good title, \$3,500; '66 Dodge Polaro 2-door HT, 383 V8, auto, PS, PB, air, runs good, \$3,800; '67 Chevelle Malibu 2-door, 283 V8, auto, PS, air, runs, needs restored, \$4,500 firm. 405-672-0048.

'64 Ford Galaxie, good tires, new front end, new interior, good body, drive every day, \$4,000. 405-613-9746.

'65 F250 4x4, \$1,100; '39 B JD, \$2,000; '81 F150 4x4, \$2,700;

'53 Ford F600, \$125; looking for Ford Jubilee that may need work, also need JD H parts. 405-422-1795.

'89 Cadillac brougham, 65K, always shedded, new Uniroyal tires, 1 owner, \$5,000. 405-833-2382.

'48 Ford F5 C.O.E. truck to be restored, not running flathead 8 engine, 4-speed trans., \$1,450. 580-654-1477.

'62 Oldsmobile 2-door hardtop to be restored, not running. 405-6543-1507.

'81 Ford 1-ton, 400 V8, auto trans., good tires, Sthal utility bed, cruise, running boards., \$1,475. 580-654-1477.

'78 Ford LTD 2-door; 1-owner, \$395. 405-282-4919.

FARM EQUIPMENT

SPEIDEL WEED WIPER. #1 Herbicide applicator for weed control. All sizes available. Recovers in stock. ATV mountings and Quality weed wiper carts. www.acrsales.com or 405-321-7843 or 1-800-544-1546.

Oliver row-crop tractor with gas engine, runs okay, good tires, \$3,500. 405-222-1445.

Spring tooth harrow, 9-foot Hoeme, 5-foot belly mower. 580-698-2454.

Peerless International roller mixer, has been shedded, like new. 580-837-5582.

300-gallon steel tank with skids for pickup. Used as nurse tank for liquid feed. Complete with drain hose, would make good water transport tank. 918-335-1450.

IHC 1150 grinder-mixer, good condition; 5x14 Kelly Ryan mixer feeder with scales; several 4- and 6-inch augers 12 to 16 feet. 918-967-8435.

Krause 15-foot chisel, 2-fold harrow, 14-foot disc, 12-foot

Case one-way. 580-698-2454.

Ford 4000 gas tractor, hydraulic operated belly blade, box blade, 4-foot Brush Hog, \$3,500. 918-545-2270.

New 550H Case dozer, long wide tract with 94 hours; 283 9-ft. Krone disc mower, field ready. Drumright, 918-352-3063.

2 1,000-gallon fuel tanks on skids with pump, \$1,500. 405-410-2152.

'56 WD-45 Allis Chalmers with wide front end, good tires. 918-623-1609.

'04 Kubota BX 1500 subcompact tractor; 15 HP water-cooled diesel, mid and rear PTO, 3-point pickup, 4x4, hydrostatic trans., turf & ag tires, 48-inch slide deck, power steering, 70 hours, box blade, \$7,200. 918-682-2499.

'47 B Farnall, 3-point hitch added, runs and starts easily, \$1,000. 405-454-0148 after 5 p.m.

752 JD 10-ft. no-till drill, always shedded, low acreage, \$15,000. Cleveland, 918-358-2047.

4-horse Featherlite aluminum FRP gooseneck, 20-ft., heat/air, bed, shelves in dressing room, rear tack, mangers, older trailer but good condition. 918-473-6743.

Two 500-600 gal. fuel tanks on stands, \$125 each; gas-powered auger on wheels, \$25; 250-gal. gas tank, \$50. 580-623-5914.

Two Cub Farnalls, belly mowers, plow, grader blade, both \$2,000; 200 Farnall, WF, 2-point, new tires, \$2,200; Super H Farnall, WF, 3-point, \$2,000. 918-352-2966.

New Firestone 710x70R38 tractor tire, 2 star, \$500. 918-486-2216.

Antique drag plows, \$25 per bottom. Case, 3; IH, 2; EP, 2; F&H, 2. 405-941-3424.

Two steel flat beds for 3/4- and 1-ton pickup with gooseneck hitch. 580-758-3300.

4320 John Deere, 116HP, good solid tractor, no cab, \$8,800. JR Beaty, 918-358-1244, leave message.

'36 model U Allis Chalmers tractor on rubber, complete. 580-395-2952.

'94 W.W. 16-ft. gooseneck cattle trailer, good condition, \$2,350. 918-423-4013.

LIVESTOCK

Want to buy Twin Valley Precision E161 and or Gar Precision 1680 semen. 405-354-4300.

Limousin bulls and heifers. Top A.I. genetics, gentle, guaranteed. Wildhorse Valley, 405-408-6166, 405-279-3398.

Registered Beefmaster bulls, show heifers, great pedigrees/bloodlines, many are polled, red, dun and paints. You can see many that we have to offer at doubleducebeefmasters.com or call Double Deuce Beefmaster at 918-253-8680.

Gray Brahman bulls, 9 months and up, starting at \$750. 918-367-2735.

Serviceable age Angus, black polled Limo and Maine bulls. Will FT. Small square wheat straw; 3-point cultivator and blade; 6-foot creosote posts. 405-381-4307.

Angus bulls, 12 to 16 months, top animals out of 7 herd sires. In Angus business 50 years at same location. 580-456-7241.

Beefmaster bulls, heifers – performance tested on forage, foundation genetics, bred for the 6 essentials, practical cattle with proven performance. Simon Creek Beefmasters, 580-668-2523.

2-year-old 7/8 Maine-Anjou bull by BK Backdraft, \$3,000. Also 50 Angus cows, spring bred to same bulls, 4-5 years old, \$1,600. 918-629-9382.

AQHA, APHA stallions at stud – buckskins, blue roan, perlinos (cremello), chestnuts, tobiano, top bloodlines. Also foals, yearlings, broodmares for sale. www.Bedonna.com or 580-569-2942.

Hatching baby turkeys, ducks, guineas and chicks. Aracauna, Polish and 5 breeds of Bantam, March through

May, Ada, 580-332-8110.

Standing – black AQHA stallion, Zip Zap Black. All around producer, performance ROMs, incentive fund. \$650 fee. Shipped semen available. Weanlings, yearlings for sale. 580-658-5080.

'04 AQHA, APHA colts, fillies out of son of Doc O'Lena and Doc Sug, dams Tim O'Lena, Docs Hottrodder, Croton Oil, Flit, Doc Sug, Doc Tari, etc. Starting at \$2,000. 918-789-5288. J&P Game Bird, 580-795-7089. Quail, ringneck pheasant, chukar, wild turkey, wild mallard, chicks and eggs. Call and order.

Quarter Horses – broodmares and colts, '86 brown stud, Poco Bueno-Bert breed, hand or pasture breed. Wide front M Farnall with PTO. 580-545-3539.

AQHA 5-year-old blue roan filly, broke, gentle, 14.3 hands, Speedy Glow, Top Moon, \$2,500. Colbert, 580-296-2732.

Registered Red Angus breeding stock. Open heifers, bred heifers, cows, cow-calf pairs. A.I. for over 25 years. They look orange to me. 405-547-2694.

APHA: Stallions, mares, '05 babies; Dash for Cash, DocBar, Smooth N Easy bloodlines; black/white, sorrel/white, solids. Cutting down, great prices. 405-262-8499.

Reg. Polled Hereford bulls, 15 months old, also a few registered replacement heifers, 1 to 2 years old. 38 years breeding Polled Herefords. 580-436-4767.

Mayes Mini ranch in NE OK has several quality AMHR miniature horses and a few AMHAs. 918-782-4752 after 5 p.m., nancym1@junct.com

Percheron/Walker cross colts. Nice size, loving disposition. 2 black, 1 bay, \$750 each. Reg. Percheron stud service, \$250. Arrington Carriage Co., 580-492-4932.

Sell or trade 5-year-old bay registered Quarter Horse gelding, 14.1 hands, Peppy San Badger, Doc Bar, broke, gentle, \$1,500. 405-769-9921.

Registered Paint, 3 year gelding, loud colored, short stocky built, started tracking steers, Doc Bar, Happy Hancock, \$1,750; handmade cowboy saddle, like new, \$1,500. 580-723-4258.

Top quality Polled Dorset March-born club lambs, \$150. 580-496-2222.

Must sell, retiring: son of Easy Jet II, C.D. Raider, APHA, 10-year-old, excellent breeding, disposition. 580-871-2265.

MISCELLANEOUS

AG APPRAISER -- Earn up to \$65,000 per year, part time. If you have a livestock or farm equipment background you may qualify to become a Certified Agricultural Appraiser. For free information please call the American Society of Agricultural Appraisers (800) 488-7570 or visit www.amagappraisers.com

New Release Certified
OZARK
Wonder Grass/Midland 99
DOUBLE YOUR
PRODUCTIVITY OF YOUR LAND
WITH HYBRID BERMUDAS.
Deep rooted, cold, drought tolerant.
Greens up earlier & stays green longer.
Newly developed Bermudas are the best cost effective forage you can find.
HIGH PROTEIN
1-800-264-5568-05
www.bermuda-hybrids.com
SPIDER IRRIGATORS AVAILABLE



TURTLE & BREAM Traps. Traps that really work. Free Brochure. Smith Mfg., 5896 Nuthatcher Rd., Gilmer, TX 75645 (smithmfg@aol.com)

Meat Grinders, Cubers, Butcher Supplies, Catalog \$2.00. Home Processor, 4501 Ledan Rd. Ext., Gainsville, Ga. 30506, 770-535-7381, www.Home-Processor.Com

SUSPENDERS WITH PATENTED "No-Slip Clip." Free Catalog. 800-700-4515 www.suspenders.com

Compare our prices before you buy. Carver Monuments. 405-932-4398.

Discounts for Farm Bureau members on professionally installed seamless aluminum guttering. Choose from either five- or six-inch guttering. Free, no obligation estimates. 405-760-4038.

For Stanley Home products and Fuller Brush products, call Lou at 405-769-3575.

Custom machine quilting, any size, also machine embroidery, clothing, quilts, etc. 918-653-2622, 721-4046.

12 - 15 concrete forms, 2x8 frame, 2x4, 3/4 plywood sides, \$20 each. '63 Chevy school bus w/300 cubic inch engine, 2-speed transmission, \$800. 580-765-4229.

15 sets of masonry scaffolding 5 feet wide 5 feet tall, 7 feet long, like new, \$175 each, quantity discount. Oklahoma City, 405-799-7542.

8-year-old proven income-producing system for lottery. Free information. 877-526-6957, ID #W7166.

Free Bible correspondence course. Self paced, no one will call you. Write Bible Study, Attn: Randell, Box 145, Duncan 73534.

Limited edition signed and numbered Kelly Haney prints. A few framed, approximately 60 prints, would like to sell 1 or all. 580-223-6126.

Refrigerator, 25.5 cubic foot w/ice maker, \$150; double recliner sofa, \$300; storm door with hardware, \$30; heavy duty 5-drawer desk and chair, \$100. 417 N. 1st St., Tecumseh 74873.

16.5 rims, 8-hole with Hummer tires for Ford truck. 918-339-6340, 339-2561.

Flotec water well pump and pressure tank, less than 2 years old, \$190. 405-288-2512.

Real estate help in Tulsa and 10 counties: home, land, ranches. I will find them for you, will email or mail listing copies. Bob, 918-697-6598, 251-7446.

SW Oklahoma moms work from home, no selling, no inventory, no delivery, no home parties. 580-335-5442, 335-2258 or www.agmomsluvhome.com/www.mom4cancerfrerag.com

Big square or conventional bales of alfalfa hay from Red River bottom. New crop in mid April. 580-310-2907, 456-7715.

Gas and oil, you can produce it. I'll teach you. 40 years experience, private, Christian atmosphere. America needs more producers. 580-628-3209.

Daewood forklift with carpet lift, runs on propane, excellent condition, 5,000-pound lift capacity. 580-569-2141.

Tiny Beanies, Beanie Babies & Buddies, \$1 - \$5 each plus S&H, '92 and newer only, lots to choose from. 918-256-2376, leave message.

Complete set 1953-57 True West, Frontier Times, all first editions, approximately 275+ volumes. 580-276-3063.

1890 pump organ, excellent condition with the look of a pipe organ, \$750. 405-282-1482.

Fuller Brush, Stanley Products. 918-473-2700.

Thousands of ceramic molds, hundreds of jars of paint, all kinds of supplies, mix, 2 large kilns, lots of greenware. 580-332-0950.

'04 Yamaha 4-wheeler, 4x4, push button, 350 CC, automatic transmission, low hours, asking payoff. 580-353-6956.

3-horse slant gooseneck trailer with small tack room, \$2,500; Andy Card 16-inch seat saddle, excellent condition, \$500;

7-year-old sorrel gelding, well broke, \$1,500. 405-527-7987.

Are you sick and tired of being sick and tired? Limu moui, a sea vegetable, has helped thousands. Call for free information, 918-629-9311.

Crocheted names, weddings, anniversaries, friends, any occasion. \$3 per letter. 580-563-9470.

Proven results with a fabulous skin care company. Call Annie at 580-327-2557 to try a free sample pack.

Piano and matching bench, \$150. 580-298-5494.

Saddle - new Billy Shaw, 13-inch seat, adult length fenders, secure suede seat, 1/4 horse bars, \$425. 580-669-1110; days 405-744-6751.

12-inch Delta planer with extra knives, \$100. 405-366-8308 after 5 p.m.

Pound cakes, 25 different recipes, \$3. I built a business with 1 of these. Marge's Country Kitchen, Rt. 1, Box 164A, Duncan 73533.

Excellent condition 1946 solid wood dresser with legs, 6 dove tail drawers with hand pulls, perfect 29x43 framer mirror, good antique, \$425. Tuttle, 405-381-3639.

Cage: iguana or snake, etc., varnished wood plexi-glass front, wood and wire top door, florescent light, \$300. 405-745-2852.

Check our prices: New Dixon ZTR mowers, all sizes in stock. 918-642-5785.

Mobile medical equipment repair. Factory certified repairs on power wheel chairs, scooters, power chairs; ramps and chair lifts available. Tipton, 580-667-5375.

Stanley Home Products, Fuller Brush. All purpose cleaners, personal items, vitamins. Become a sale rep, earn lots of money, awards, trips. 580-497-2249.

Elvis Presley LP records, over 100; also lots of 45 RPMs. Will sell at reasonable price. 918-653-2605.

Berkline recliner lift chair, like new, '03 model, 3 years left on factory warranty, asking \$600. 405-567-4139.

Natural, hormone-free beef for sale. 405-224-3580.

Pull-behind motorcycle trailer, 6'7"x3'3", new tires, spare, swivel tongue, hubcaps, lights, black, needs paint, \$200. 405-990-5684.

'83 Carriage bumper trailer, 33 feet, always shedded, extra nice condition. 580-727-4315.

Horse hay - Bermuda, prairie, heavy 4x5 round bales, net wrap over edge, \$15/bale. 918-273-1098.

Air purification for the whole home or RV. Eliminate odors, sanitize air and surfaces with NASA technology. Off duty law enforcement. 405-550-9492.

Business opportunity: \$1,265 business startup \$100 per month; first year income \$5,000 per month, proven system. 580-326-5726.

Antique wooden phone booth, \$1,100. 580-777-2810.

Storage trailer good for feed, tack, tools and miscellaneous, delivery available. 405-258-6559.

Gun dog training. Now taking reservations for summer. Started dogs and Brittany puppies for sale. Bull Creek Kennels, 918-323-0669.

The Skylight Protector protects skylights from hail, golf balls, falling ice or debris damages and reduces noise from falling nuts, acorns or pine cones. CCobb Inc., 580-362-3201, skylightprotector.com

Miller 210 amp MIG welder, less than year old, \$950; Igloo dog house, \$45; Makita reciprocating saw, \$50. 405-771-2079.

Custom knitting: wedding, anniversary; afghans, baby blankets, Christmas stockings (good wedding, baby gifts), cotton dishrags, hats, scarves, etc. 918-474-3487.

Sodium bentonite granular seal for leaking ponds as low as 8¢ per pound. 405-382-1973.

Alfalfa hay, 4x8 ft., reasonable, and in barn. 1 bale or semi load. Joe Funkhouser, Hobart, 580-450-5730.

Bermuda hay, small square \$4/bale; large round, \$25 to

\$35/bale. 580-977-7995.

Natural candles with pure nature scents, pamper items for stress, oils. Affordable prices. Debra in Oologah, 918-693-9889.

Hundreds of mowers, rider and push. All need work. Some salvage plus miscellaneous parts. Poteau, 918-649-0213.

Brake lathe. Coats CBL-10, all attachments, excellent condition, \$1,500. 580-757-2300.

'79 Kingfisher fiberglass boat, 50 HP Evinrude, trolling motor, trailer w/new tires, exc. cond., \$2,500; 72 14-ft. DelCraft flat bottom aluminum boat, 7.5 HP Mercury w/sep. tk., exc. boat motor, trailer/new tires, \$1,500. 580-725-3462.

Allergies, asthma, eczema? Create a healthier home for your family, 100% money back guaranteed household products. 580-369-3610.

100-year-old doctor's buggy, exc. cond.; WWII 30-cal. M1 carbine, exc. cond. 580-658-5522.

Free, fast, easy! Selling your home or property? Expand your local sales market. Sell coast-to-coast w/a virtual tour on the Internet. Jana, 405-642-2780 for more info.

Saddle holder, holds 3 saddles; '54 Intl. dumpster hauling truck. 580-563-9470.

Rare, beautiful old cobalt blue Aladdin lamp, complete; Imperial carnival glass, all colors, made in '64. 405-398-4580. Watkins products. Complete line of flavoring, spices, health/beauty aids, cleaning products, vitamins, lotions. 405-258-2453.

Save money, make your own flea shampoo, recipe, \$3. Also leftover holiday recipe books, \$4. T.F., POB 484, Okemah 74859.

Convert your stocks, bonds, mutual funds, CDs, savings accounts, IRAs to an investment that earns 10% fixed. Free report. Stefani, 405-417-0587.

Still legal to order prescription medication from Canada. ordermymedicine.com or Stefani at 405-417-0587.

5-gallon plastic buckets, \$1.50 each; 15 old assorted post cards, \$1.50 each; horseshoe table lamp, \$25; barn wood mirror frame w/horseshoe hangers, \$30. 405-948-8587.

18 HP 44-inch Craftsman riding mower, \$300 OBO; drag type Servis Brushhog, \$200 OBO. 580-937-4371.

'99 Avion 5th wheel, 3 slides, 35-ft., all awnings, 2 TVs, Corian cabinet tops, home entertainment, like new, \$29,000. 405-793-7406.

Large round bales of rye straw at Perkins. 405-743-5631, 547-2360.

PETS

Stud - my AKC LH min. dapple doxie needs a mate. Stained glass glasses and contract work. Camille, 405-273-3700.

2 AKC Collies, 2 years old, females, sable/white. 580-265-9654.

Reg. Blood Hound pups, purebred, male and female, black and tan, born Jan. 31. 580-223-4897.

AKC Pug puppies, shots and wormed, nice and healthy, champion in pedigree, \$500. 918-434-5414.

AKC Maltese, Pekinese, Pomeranian and UKC Rat Terrier puppies. Cash only. 918-799-5060, 465-7082.

AKC German Shepherd puppies, stud service. 100% European bloodlines, parents hip certified, shots/wormed. Pictures of pups, parents at brushcreekkennels.com or 405-372-8990.

Registered Boxer puppies. 918-606-1674, 358-3160.

AKC Pomeranian puppies, beautiful coats, all colors including parties, blues, chocolates, S/W, sizes range from 2 to 6 pounds. 580-421-9942.

AKC puppies - Yorkies, Maltese, Shih-Tzus. 918-422-0040.

Registered Pug puppy, family raised, already trained, good bloodline. 918-256-2376, leave message.

AKC female chocolate Lab, 8 months, needs playmates and room to run around, has all shots, \$150. 580-830-0279.

Dorene's Pet Sitting & Taxi. I'll come to your home and take care of your pets, 3 years experience, references, insured. 918-234-2005.

Free black Lab mix puppies, 6 months. Cockatiel and cage, \$50. 405-454-0557.

REAL ESTATE

Nice 2.5-acre tracts for doublewide or other home sites. 4 east of Guthrie. 405-743-4455.

Ag loans, home loans. Lots for sale in SW Oklahoma, owner financing. 580-875-6083.

560 acres in southeast Creek County, 400 acres improved pasture, good hunting, water and electric available, county road frontage, 7 ponds. 918-267-5015.

4-bedroom, 2-bath, 2-car garage with cellar under storehouse, central heat, fireplace, with 5 wooded acres, \$125,000. Option to buy additional acres joining on the other side at \$10,000 per acre. 405-238-9436.

2-story home with 5 bedrooms on 3 acres, 3 full baths, 2-car garage, 2 new heat and air units, needs roof, would make a great bed and breakfast, hot house and hot tub, 2-story building from horse barn, \$375,000. 405-381-3537.

For sale by owner, brick house in Chattanooga on corner lot, trees, 3 bedrooms, 2 baths, 2-car garage with cellar, utility room, fireplace, central heat and air, \$70,000. 580-695-7115.

Rock and cedar 2-story home atop hill overlooking Wilburton, approximately 4,000 sq.ft. with 3 bedrooms, 2 1/2 baths, fireplace, CHA, walk-in closets, 2-car garage, private drive with rock walls. For appointment, call 918-465-7217.

3 lots on Lake Eufaula in Timbercove addition, 150 x 106. 918-341-7479.

360 acres highly improved ranch, 2 miles of highway frontage, luxury home, in-ground pool, barns, corrals, all excellent for livestock, a working ranch, \$1.4 million. 918-733-9511.

1,500 sq.ft. '97 3-bedroom, 2-bath, study with garage/workshop and shed on 4 acres, near Lake Thunderbird/Norman. Seller pays closing costs, \$85,000. 405-321-4796.

95 to 110 acre farm, steel barn and corral, 8 ponds, new 7-wire fence, steel post around, \$1,500 per acre. 405-279-3433, 833-4715.

19 acres, 2 double wides, both 1,800 sq.ft. w/3 bedrooms, 2

baths, both all electric. Site has rural water, just off blacktop, close to Grand and Eucha Lakes, \$149,000. 918-253-8977.

22 acres with 4-bedroom, 3-bath house, 48x72 horse barn, 36x48 hay barn, SE of Ada. More land available, 65 acres. Paint horses by Bugs Alive Jr. 60 HP John Deere tractor. 580-421-9005.

160 acres NE of Gracemont, some trees, pond. Sue's Auction & Real Estate, www.suesauction.com

2.5 acres w/new 32x62 building, not completed. Site pig stand eating place built in 1925 in Coffeyville, Kan. Name, recipe include in sale. Owner in Iraq. 620-922-3228.

5 acres in Colorado w/15x30 cabin plus park model trailer w/tip-out, 250-gallon L.P.G. tank, 10K generator, excellent water well, lots of trees, other goodies. 580-727-4357.

Sell or trade - Lake Texoma, 1.8 wooded acres, 14x60 older mobile home, UR, FP, 2-bedroom, 1-bath, front deck, covered back porch, 12x28 workshop, fruit/nut trees, \$49,000 OBO. 918-756-2964.

2.25 wooded acres M/L w/3-bedroom, 2-bath manufactured home built in 2002, home has brilliant masonry exterior veneer w/brick charcoaler/smoker on front lawn, \$54,900. 918-366-7444.

Nice 2-bedroom, 1-bath home in Tulsa on large lot near the Expo Center, \$89,900. 918-476-6673.

12-plus acres total, divided into 2.81, 4.98 and 4.58 tracts, 191 & Champ Johnson Rd., Bixby area, Tulsa County, 20-30 minutes from Tulsa, all land is wooded, part of land has creek, \$15,000/acre. Jason, 918-691-0988.

Nice 3-bedroom, 2-bath brick home at Lake Hudson near Salina and Pryor on half acre in gated community with pool, fishing dock, boat dock, only \$113,000. 918-283-1534.

5 acres with 3-bedroom, 2-bath double wide Solitare, large garden room, deck, 2-car garage, RV/boat storage. 580-993-2045.

Hot Springs Village, Ark., lot 024-14-103 Estancia. 918-456-5333. Lots, convenient to Guthrie/Edmond area, ready to build for superior living, \$19,500. For information call 405-282-1482.

Deeded timeshare Branson, Mo., 3-unit lockout penthouse located on golf course, has enclosed pool, tennis court, every year use, 5 star rating, \$14,500. 918-793-7521.

Timeshare for sale, \$12,000, may trade for something of equal value. Purchased in Branson, but can be used just about anywhere. 918-687-9919.

Recreation retreat/hunting: secluded 237+ acres

w/Bermuda hay meadow, 75% wooded, pond, abundant wildlife, Stigler. Darla Beeby, Realty Plus, 405-258-0857.

80-acre ranch w/2,600 sq.ft. 5-bedroom brick home w/2-car garage, barn. Carl Martin, Realty Plus, 405-258-0857.

24 acres near Lazy E in Guthrie on Midwest Boulevard, small pond, surrounded by Bermuda pasture land. 405-433-2117.

RVs, MOBILE HOMES

24-foot Winnebago, lake ready, \$3,500; '83 Ford van, 4 captain's chairs, dual bed/table, front/rear air, good condition, \$3,500; fish/ski, inboard, drive-on trailer, \$3,500. 580-536-5474.

'90 Bouncer RV, 34-foot, custom interior, Pergo floors, oak cabinets, added pantry, very good condition, tow package, 51K, \$16,000. 918-376-2050.

'01 Fleetwood 28x44 double wide, 3 bedrooms, 3 baths, 1,202 sq.ft., excellent condition, special order, upgraded appliances included, custom deck and skirting also included, must be moved, \$25,000. 405-381-2621.

'96 Wilderness 33.5-foot F.W. super slide, fully self-contained, second owner; very nice, walk around bed, queen bed, \$12,500. 405-390-8660, 317-1245.

Southwind RV, Class A, 22-foot, 58K, microwave, fridge, H/W heater, roof air, Onan generator, all work, 360 HP Dodge engine needs some repair, good floor plan, \$3,500. 405-771-3399.

'02 Outback, all the extras, bumper pull, 1 slide, sleeps 6-8, 2 HD batteries, 2 fuel tanks, 28-foot, heat, air, awning, less than 100 miles on tires, \$17,000 OBO. 580-673-2463.

Selling due to health reasons '95 8.5-foot pickup pop up camper, bath, R.W.H., 2-way refrigerator, AC, jacks, extra clean. 580-625-4247.

'03 Champion mobile home, 16x80, 3 bedrooms, 2 baths, rocked stove in kitchen with tons of built-ins, to be moved, \$22,500 neg. 918-557-7804.

Newer model cab-over bolt-on style pickup camper, AC, TV, electric, aluminum frame, beautiful paneling, tinted windows, camper jacks included, \$950. 918-341-8361.

'98 Jayco Eagle 5th wheel, 28-ft., loaded, excellent condition, 1 full slide, non-smokers, stored indoors, \$12,500. 405-789-0072, 694-3816.

'99 30-ft. Sunnybrook 5th wheel, slide out, Jelco siding, large awning, solid oak cabinets, rear kitchen, microwave & oven barely used, lots of extras, excellent location, possible trade,

Country

Classifieds

2501 N. Stiles • Oklahoma City, OK 73105

Each Farm Bureau member family is limited to ONE free classified ad per issue. This form must be used. No call-in ads will be accepted. The length of the ad can not exceed the number of lines on this form. Ads run only one time.

All information below must be completed.

Please type or print legibly.

Name _____

OFB Membership Number _____

Address _____

City _____ State _____ Zip _____

Phone (____) _____

Area Code

Deadline for the next issue is June 15, 2005.

Kitchen

COWBOY STEAK WITH RED CHILI ONION RINGS

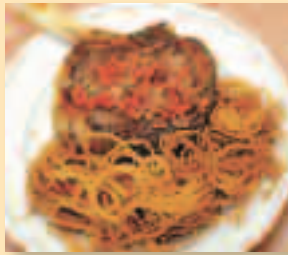
- 4 room temperature 1 1/2-inch thick Certified Angus Beef® rib steaks (T-bone or porterhouse steaks may also be used)
- Salt and freshly ground pepper

Salsa:

- 2 small red onions, diced
- 2 pounds tomatoes, cut into 1/4-inch pieces
- 6 tablespoons fresh lime juice
- 6 tablespoons fresh cilantro, finely chopped
- 2 tablespoons jalapeno chile peppers, finely chopped and seeded
- 2 tablespoons olive oil

Onion Rings:

- 4 white onions, cut into 1/16 to 1/8-inch wide rings
- 3 cups milk
- 3 cups sifted all-purpose flour
- 1/2 cup chili powder
- 3 tablespoons plus 2 teaspoons cornstarch
- 3 teaspoons salt
- 3 teaspoons ground cumin
- 2 teaspoons sugar
- 2 teaspoons Hungarian hot paprika
- Vegetable oil for frying



1. For the salsa, soak red onion in water in large bowl for 1 hour. Drain thoroughly. Transfer to medium bowl. Add tomatoes, lime juice, cilantro, chile peppers, oil and salt, and toss well. Cover salsa with plastic wrap and refrigerate until ready to serve. (Can be prepared 6 hours ahead)
 2. For the onion rings, soak onions in milk in large bowl for 1 hour. Drain thoroughly. Mix all remaining ingredients except oil in another large bowl. Dredge onions in flour mixture, shake off excess. Heat oil in large heavy saucepan to 375°F. Add onions in batches and cook until golden brown, about 45 seconds. Transfer to paper towels using slotted spoon; drain well. Serve immediately.
 3. Prepare barbecue over medium-high heat. Season steaks with salt and pepper and grill to desired doneness (about 7 minutes per side for medium-rare). Transfer to plates. Drain salsa and spoon onto steaks. Serve steaks immediately with onion rings.
- Cooking Time: 1 hour and 30 minutes (oven) 5 hours (slow cooker)

PEPPERED PORK TOP ROUND STEAK WITH MUSHROOM SAUCE

- 2 boneless pork top round steaks, cut 1/2-inch thick, about 1 pound total
- 2 teaspoons each butter and vegetable oil, divided
- 8 ounces sliced mushrooms
- 1 tablespoon Dijon-style mustard
- 1/2 cup heavy cream
- 1 teaspoon freshly ground black pepper



Heat 1 teaspoon each butter and oil in large heavy skillet over medium-high heat. Season steaks with salt and pepper; brown well on both sides, turning once, about 9-10 minutes total. Remove steaks from skillet and keep warm. Add remaining butter and oil to pan; cook and stir mushrooms until tender, about 6 minutes. Stir in mustard, cream and pepper; cook over high heat, stirring constantly, until slightly thickened. Serve mushroom sauce with steaks, steamed asparagus spears, mashed potatoes and a tossed green salad.

reduced to \$15,500. 918-962-3628.

'02 27-ft. Salem 5th wheel, slide, hitch included, bought new, used 3 times, \$15,000 OBO. 405-381-2722.

WANTED

**We Purchase
Minerals
405-521-9685**

I BUY BLACKSMITHING TOOLS AND EQUIPMENT. MIKE GEORGE, 1227 4TH ST., ALVA, OK 73717, 580-327-5235.

WANTED OLDER VEHICLES, CARS, PICKUPS, VANS, WAGONS, 1900s THRU 1960s, GAS PUMPS, TAGS. 580-658-3739.

WANT TO PURCHASE MINERALS AND OTHER OIL/GAS INTERESTS. SEND DETAILS TO: P.O. BOX 13557, DENVER, CO 80201.

Want to buy Twin Valley Precision E161 and or Gar Precision 1680 semen. 405-354-4300.

Want to buy old visible 10-gallon gas pumps; for sale '46 IH Cub B, '47 Case D.C., good tires; restored blacksmith tools, signs and anvils. 580-639-2776.

Collector paying top \$\$ for authentic arrowheads and Indian artifacts. 918-697-7044.

Want to purchase oil, gas, mineral rights, producing or non-producing. 800-687-5882, 580-223-0353.

Want Catahoula female dog out of working parents. Have male Catahoula, blue eye/brown eye, white with gray patches and web rear feet. 580-657-8274 after 6 p.m.

Collector wants old Case tractors, 600, 700, 800, 900 and others. Toll free, 888-508-2431.

Want old American Indian items such as pottery, beadwork, baskets, paintings, jewelry, photos, etc. Will pay top dollar. 405-454-3420.

Looking for a companion: I need a female Red Heeler, will settle for Blue Heeler. 580-677-9569.

Want old gas pumps, 1950s and older. 918-689-7876.

Want old style steel John Deere planter plates (need melon plates); JD flat belt driven #4B corn sheller; JD #5 sickle mowers. 918-366-2403.

Want to buy 3-point side delivery rake, pecan shaker, rototiller for small tractor. 405-372-7787.

Want front clip for '60 Ford F-700 truck, must be in good condition. 918-333-3974.

Want transmission parts, differential for 310G Case dozer or complete unit. 918-427-7052 after 4 p.m.

Collector pays cash for antique fishing lures, tackle; also wood duck decoys. Troy, 800-287-3057.

Wanted anything to do with locksmithing. 918-224-0206.

Paying top dollar for mineral rights and oil and gas royalties. Call toll-free at 888-573-6839 or write P.O.B. 3756, Edmond 73083.

Need information on SN Ford Tractor, has '32 model B car engine, only made 1 year. 918-762-2919.

Want to buy clean, low hour JD 4040 or 4240 w/cab and air, quad range or power shift. 405-850-1005.

Does anyone have operating instructions for hanging "rain lamp?" My lamp was bought in '77. 918-666-8699.

Looking for round bale hay trailer, dumps, hauls 4-6 bales; looking for good used wire tie small square baler. 918-786-7880, leave message.

The Galapagos turtle can live to be 193 years old. Must be nice.

Here's to a good life.



Farm Bureau for life . . .

Insurance. Annuities. Mutual Funds.



OKLAHOMA FARM BUREAU

Mutual funds are subject to market risk and possible loss of principal. This and other important information is contained in the prospectus, which can be obtained from a registered representative and should be read carefully before you invest or pay money. Investors should consider the investment objectives, risks, charges and expenses carefully before investing.

Securities & services offered through EquiTrust Marketing Services, LLC,* 5400 University Avenue, West Des Moines, IA 50266, 877/860-2904, Member SIPC.
Farm Bureau Life Insurance Company†/West Des Moines, IA *Affiliated †© 2005 FBL Financial Group, Inc. 324

Conserve Energy With Alcoa Siding

***CUT FUEL COSTS! *CUT HEATING COSTS! *CUT COOLING COSTS!**

Alcoa Steel & Vinyl Siding America's At Home With Alcoa

Yes! Energy savings over a short period will more than pay for the new siding investment in your home.

Does not absorb or retain moisture like wood.

Does not support combustion.



Stays beautiful wherever you live!

Retains beauty year in, year out.



Does not peel, flake, corrode or rust. Easy to clean—simply hose down.

Marks, scars, abrasions don't show. High impact-resistant.

White & 12 decorator colors. Never needs paint—durability built in not painted on.

Insulates against cold or heat.

Goes up easily over wood, asbestos, stucco or masonry walls.

Protect your investment in your home! Improve its value!

Muffles outside noises, assures a quieter, more livable home.

Permanently protects & beautifies your home.

Resists damaging effects of acids, salt, water, sun, rain, oil, etc.

Maintenance free -- the BEST buy in today's home covering market!

Completely covers split, warped, faded or peeled outside walls.

Here are the names of just a few of your Farm Bureau neighbors who are enjoying the beauty & comfort of Alcoa Siding products. Feel free to check with them.

Betty Rogers
P.O. Box 202
Perry, OK

Bob Bailey
Rt. 2, Box 119
Perry, OK

Carl Windham
10404 N.W. 37th
Yukon, OK

Don Reinwater
5715 Willow Dr.
Norman, OK

Neil Roberts
1430 Charles
Norman, OK

O.B. Puckett
200 Elm
Mayville, OK

Edna Hall
P.O. Box 101
Sterling, OK

Forest Masters
317 W. Sheridan
Kingfisher, OK

Beyle Jones
8512 W. Bolton
Yukon, OK

Unique Coffeours
5000 N.W. 49th
Oklahoma City, OK

Linda Sitton
P.O. Box 160
Binger, OK

Delores Knapp
414 W. Birch
Felix, OK

Tec Casness
Rt. 1, Box 85
Okemuncie, OK

Jack Steele
115 Thompson
Kingfisher, OK

Steve Lack
116 S. Fyne
Calumet, OK

Jerry Bonds
62125 Gregory Rd
El Reno, OK

Clark Graham
213 N.W. 49th
Moore, OK

Carl McKinney
P.O. Box 560
Eufaula, OK

Greg Eggs
28505 N. Acker Hwy
Deer Creek, OK

Daniel Garrett
1929 S. Jansen
El Reno, OK

Mike Yorsay
25502 S.E. 15th
Harrah, OK

Al Castro
4801 Winners Circle
Norman, OK

Don Blake
308 E. Jansen
Midwest City, OK

Kenneth Azile
P.O. Box 821
Seminole, OK

Gerald McDaniels
14714 Noy Ridge Dr.
Newalla, OK

Mike Linkie
201 Owen
Mustang, OK

Mike Lee
Rt. 4, Box 123
Tulsa, OK

Larry Yost
315 N. 3rd
Watonga, OK

Sterling Miller
312 Kansas
Chickasha, OK

Mershel Nichols
Route 7
Pogue, OK

Jerry Maynes
P.O. Box 208
Cashion, OK

Charles Frank
3830 Brook Hollow Ct.
Stillwater, OK

Lynn Laker
720 W. Jackson
Cressett, OK

Jim Youngs
1201 Clearview
Mustang, OK

Tessie Richardson
P.O. Box 287
Puzzell, OK

Cade Boepple
Rt. 1, Box 7
Covington, OK

Randy Plant
18701 Garden Ridge
Zahand, OK

S & J Tire Co.
Hwy. 61
El Reno, OK

Ron Pickerton
7521 N.W. 40th
Oklahoma City, OK

Leslie Bradford
Rt. 3, Box 258
Watonga, OK

Sharon Graham
2021 Bella Vista
Midwest City, OK

James Bryant
1755 N. Country Club
Newcastle, OK

Kellar Reet
820 N. McAulder
Oklahoma City, OK

Larry Smith
Rt. 2, Box 722
Kingfisher, OK

Mickey Brown
1725 Country Club
Newcastle, OK

Barth Construction
Lar 6 Mile Turkey Hollow
Stillwater, OK

Jeff Palmer
822 S. 6th
Kingfisher, OK

Stanley Miller
Rt. 3, Box 1254
Perry, OK

Mike Nemes
Rt. 1, Box 99
Perry, OK

Willie Clay
1845 N.W. 22nd
Newcastle, OK

Don Jantz
Rt. 3
Enid, OK

Dawn Faust
9323 Lyric Lane
Midwest City, OK

Veas Zum Miller
Rt. 4
Okarche, OK

Jim Nichols
4737 Great Pt.
Del City, OK

Glenda Inck
2001 N.W. 118th
Oklahoma City, OK

Teresa Parham
128 Chickasha
Yukon, OK

Renee Winch
5400 N.W. 66th
Oklahoma City, OK

Mark Kelley
3421 N.W. 67th
Oklahoma City, OK

Richard Bowen
Rt. 1, Box 151
Geary, OK

Dwayne Smith
415 S.W. 16th
Newcastle, OK

Harley Mintergardt
8100 Whitetail Ct.
Oklahoma City, OK

Dan Wiedeman
3455 N. Red Rock Rd
Yukon, OK

Mike Nichols
Route 1
Pogue, OK

Check these features

- No artificial look
- No warping in summer

- Won't rot or peel
- Won't absorb or retain moisture

- No exposed nails
- Won't break up in hail

- Won't dent like aluminum
- Static electricity attraction free.

Farm Bureau members receive a 33 1/3% discount off nationally-published retail prices. Now in effect for Oklahoma! Call 405-721-2807 or complete coupon below.

NO OBLIGATION!

Buy directly from the company owners - in the siding business since 1937! No middlemen involved. We can beat most any deal. Buy today before costs soar higher!

TERMS AVAILABLE

Special discount for FB Members Only.

NOTICE

Siding materials sold on an applied basis only.

OK! I want more information, facts, figures, estimates and color pictures of completed jobs. No obligation. You be the judge! Send coupon immediately! One of the OWNERS of the company will personally contact you! No high pressure. Just the facts for your consideration! Act NOW! You'll be glad you did!

Name _____
Address _____ City _____
Telephone _____ Best Time To Call: _____ A.M. _____ P.M.
If Rural, Give Directions _____

M. RHODES COMPANY

6408 N. Libby
Oklahoma City, OK 73112