



Muller picked for PAL Class

Oklahoma's Matt Muller is one of only 10 young agricultural leaders selected to participate in the fourth class of the Partners in Agricultural Leadership (PAL) honors program.

Farm Bureau's PAL program, carried out with support from the Monsanto Company, the Farm Credit Foundation and AFBF, is designed to strengthen participants' leadership skills and put their abilities to work for the benefit of agriculture.

Muller farms cotton, grain sorghum and hay near Altus in Jackson County. He and his wife, Kellie, were named AFBF's 2006 Achievement Award winner – the organization's top young farm family in the nation. The couple has four children, Lincoln, Luke, Levi and Tyler.

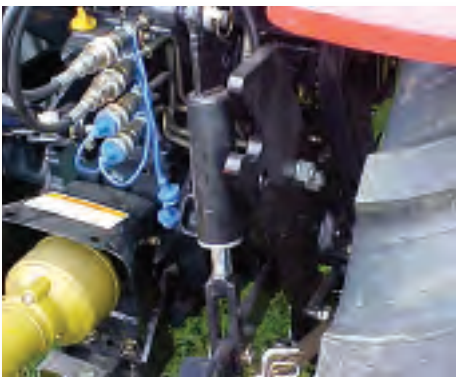
"Farm Bureau is pleased to announce the members of the fourth PAL class, and we look forward to the contribution they will make to strengthen American agriculture," said AFBF President Bob Stallman. "The first three PAL classes proved to be resounding successes and, thanks to partnerships with Monsanto and the Farm Credit Foundation, we are confident this one will be as well."

According to Stallman, the PAL program provides young farmers and ranchers with the opportunity to hone their leadership skills after they have served as AFBF Young Farmer & Ranchers Committee (YF&R) members/officers or participated in competitive YF&R events.

By participating in PAL, the young leaders will enrich their skills in problem solving, persuasion and consensus building. At the same time, they will be deepening their knowledge of specific agricultural and public policy issues.

Upon completion of the PAL program, participants will be equipped to represent agriculture in the media, on speaking circuits or in legislative activities. PAL graduates serve as "advocates for agriculture," promoting awareness on issues important to those in the farm-to-consumer food chain.

Respect for PTO can avoid injuries



The tractor's PTO can pose severe danger for operators if shields and guards are broken or missing. Always replace broken or missing shields before operating your tractor.

The figure on the warning label is cartoonish in its contortion. But becoming entangled in a tractor's power take-off can turn serious before anyone has time to react.

That's why a few common sense safety checks are in order before using equipment powered by a power take-off, or PTO.

"There's a reason all this equipment has guards, shields and warning labels on it," says Justin Grego, Oklahoma Farm Bureau Safety Services director. "And the time to think about not getting entangled is before you ever start the equipment up.

"The only sure way to prevent being injured

Win a Dodge

The winner of the American Farm Bureau Federation Achievement Award will win a nicely equipped Dodge Ram 3500 as well as paid registration to the 2008 YF&R Leadership Conference in Baltimore, Maryland.

Each of the four runners-up will receive a Case IH DX compact tractor.

Contact Oklahoma Farm Bureau YF&R Coordinator Marcia Irvin at 405-523-2300 for more information.

is to avoid all contact with moving parts."

The PTO transfers power from a tractor to implements such as mowers, posthole diggers, grain augers, manure spreaders, sprayers and feed grinders.

"The grabbing action of a turning shaft or universal joints can result in broken bones, severed limbs or even more severe injuries," said Grego.

Nevertheless, it's not uncommon for guards to get removed for machine maintenance and then never replaced.

"That safety feature can't help you any if you're in the field and it's sitting in the shop," Grego said.

Broken or missing safety features should be replaced before farm equipment gets used, and manufacturers have made considerable improvements to older safety guards.

"Talk with your dealer for specific information on what's available," said Grego.

The typical PTO shaft can:

- Wrap your arm or leg around the PTO shaft nine times in one second.
- Produce second degree burns on your skin, even if you are lucky enough to have the PTO strip only the cotton clothing from your body. Nylon and other synthetics will cut into skin and muscle rather than rub across it.
- Grind away skin, muscles, tendons and break bones starting in less than three-fourths of one second when you are caught by an unshielded PTO shaft.

"A very strong man," explained Grego, "can generate about three-fourths of one horsepower. A tractor transmits nearly all the engine horsepower to the PTO shaft. There is simply no contest. The tractor will win every time."

Amerisight®

Positioned LASIK Pricing

Freedom from Contacts and Glasses

Save **40% to 55%** off the Overall National Average Price

1-877-507-4448

www.amerisight.us/_fb

Get LASIK!



Get Amersight 1-877-507-4448
Hours: 9-5
Mon-Friday 9am-5pm
Saturday 10am-3pm

NEW TOW-BEHIND DR® FIELD and BRUSH MOWER!

— ATTACHES TO YOUR ATV OR RIDING MOWER TO MOW FIELDS WHILE YOU RIDE!



MADE IN USA

- **CLEAR OVERGROWN LAND FAST** — 2 acres/hr with 44" wide cut!
- **MOW WEEDS, BRUSH,** even 1-1/2" thick saplings — with up to 17 HP of V-Twin power!
- **OUTRIGGER™ TOW BAR** cuts 100% outside the path of towing vehicle to mow along fences, under trees.
- **REMOTE CONTROLS** let you manage all blade, clutch, and engine functions from your towing vehicle!

FREE
Depot
SHIPPING
now in
effect!

CALL TOLL-FREE
1-888-212-0629

YES! Please rush complete FREE DETAILS of new TOW-BEHIND and WALK-BEHIND DR® FIELD and BRUSH MOWERS including prices, specifications, and Factory-Direct Savings now in effect.

Name _____ FOK

Address _____

City _____ State _____ ZIP _____

Email _____

DR® POWER EQUIPMENT, Dept. 58802X
127 Meigs Road, Vergennes, VT 05491

www.DRfieldbrush.com

© 2007 CHP, Inc.



Walk-behind DR® Brush Mower models also available!

Double Savings for Farm Bureau Members Only

1. Get a special Farm Bureau deal on any car or truck at Vance Auto Group
2. Then get an additional \$300 rebate (with coupon)

Farm Bureau Members
SAVE \$300

Present this certificate along with your Farm Bureau member card to your salesperson at any John Vance Auto Group dealership and receive an additional \$300 rebate off the final purchase price of any new or used car or truck. This rebate is available only to Oklahoma Farm Bureau members and is in addition to all other rebates available. Certificate expires Sept. 30, 2007.



SERVICE SPECIAL

Oil and filter change
(5 qt. max., does not include synthetic)
Only \$19.95
\$20 off on any Diesel oil change

800.375.4471

www.vanceautogroup.com

JOHN VANCE

AUTO GROUP

Exit 153 & I-35

Just 10 minutes north of Edmond



Nine Oklahoma students awarded Farm Bureau scholarships

Oklahoma Farm Bureau and Affiliated Companies and its Young Farmers & Ranchers Committee awarded nine \$1,000 scholarships to high school seniors in May.

The students, who must pursue a career in agriculture at an Oklahoma institution of higher learning and be a full-time student, filed applications with county Farm Bureau offices for the scholarships.

All applicants had to be from an Oklahoma Farm Bureau voting member family. One student in each of the nine state board of director districts was eligible to receive the \$1,000 scholarship.

Beaver County's Melisa Barth earned the scholarship in district one. The Gage resident, who graduated from Follett High School, will attend Oklahoma State University in the fall and pursue a degree in veterinary medicine.

Custer County's Carissa Taylor earned the scholarship in district two. The Thomas resident graduated from Thomas High School and will attend OSU this fall and

major in agricultural leadership.

Grady County's William Osborn earned the scholarship in district three. The Tuttle resident graduated Amber-Pocasset High School and will attend OSU this fall and major in agricultural economics.

Murray County's Aaron Coffey earned the scholarship in district four. The Springer resident graduated from Davis High School and will attend OSU this fall and pursue a degree in agricultural economics.

Hughes County's Kaysie Fields earned the scholarship in district five. The Wetumka resident graduated from Wetumka High School and will attend Eastern Oklahoma State College this fall and major in agricultural communications.

Nowata County's Johnna Pierce earned the scholarship in district six. The Nowata resident graduated from Nowata High School and will attend Northwestern Oklahoma State University this fall and pursue a degree in agriculture ecology.

Major County's Drake Gard earned the scholarship in district seven. The Fairview resident graduated Fairview High School and will attend OSU this fall and major in plant and soil science.

McClain County's Timothy Roberts earned the scholarship in district eight. The Washington resident graduated from Washington High School and will attend OSU this fall and pursue a degree in agricultural education.

Pawnee County's Megan Bryan earned the scholarship in district nine. The Pawnee resident graduated from Pawnee High School and will attend OSU this fall and major in animal science.



keeping requirements.

"The non-compliance is not due to minor omissions but usually gross lack of records of pesticide application records," said Dr. Jim T. Criswell, pesticide coordinator for the Oklahoma Cooperative Extension Service.

The Oklahoma Department of Agriculture requires records to be kept for two years after the date of application. Records are to be provided immediately upon request in person by an Oklahoma Department of Agriculture inspector any time during the regular business hours of the business being inspected.

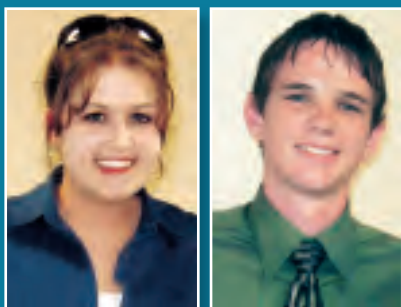
Copies of records must be furnished within seven working days of a written request by the Oklahoma Department of Agriculture.

"It is best to record application records the same day the applications were made," said Criswell. "This allows for better recordkeeping."

Dealers also are required to keep records of restricted-used pesticide sales. Criswell said these records are:

- Complete brand name of pesticide
- EPA registration number
- Date pesticide was sold
- Total amount of restricted use pesticide sold
- Name of person to who sold
- Name and license of certification number of the certified or private applicator

Criswell said OSU highly recommends that dealers not sell restricted use pesticides to persons other than those that have valid certification cards.



SCHOLARSHIP RECIPIENTS –

Seminole County Farm Bureau awarded \$2,000 college scholarships to two outstanding graduating seniors recently. Jaycie Brown, a 2007 Strother High School graduate, and Justin Parks, a 2007 Seminole High School graduate, were selected to receive the Farm Bureau scholarships. The scholarships may be used at the college of their choice. Jaycie is the daughter of Paul and Carol Brown. Justin is the son of Lloyd and Julie Parks.

Applicators fail to keep records on pesticides

After several meetings this year and reviewing Oklahoma Department of Agriculture closed complaint forms, it has become apparent that applicators are not complying with pesticide record-



Amenities like the Dillinham Garden in Enid help make Garfield County one of the top 10 rural places to live in America.

Eighty-five miles from Oklahoma City and 120 miles from Tulsa, Garfield County is largely an agricultural region—wheat and cattle. The countryside around county seat Enid is dotted with horse pastures and folks living on acreages.

Enid has two medical centers. Vance Air Force Base, on the south side of town, provides jobs and occasional aerial entertainment as pilots train to fly fighter jets.

Enid is alive with restaurants, shops and parks. It also embraces a surprising amount of public art, much of it with a local history theme.

RANKINGS METHODOLOGY

As in past years, The Progressive Farmer partnered with OnBoard LLC, a real estate research firm, to identify the most desirable rural counties to live in based on several quality-of-life indicators and statistics: household income, household spending, home and land prices, crime rates, air quality, education and access to health care.

After this list was compiled, magazine editors traveled for several months to visit the top counties and take pictures, interview residents and get a feel for each place.

Ten counties were then chosen as the “Best Places to Live in Rural America,” and an additional 290 counties were selected to be profiled on the magazine’s Web site as other best places to live in rural America.



RV vacations: destination fun

From weekend get-a-ways to cross-country driving vacations, increasingly families are discovering the flexibility and affordability of vacationing in a Recreational Vehicle (RV). A University of Michigan Survey Research Center study found that there are currently more than 9 million RVs on the road – in fact, 1 in every 12 vehicle-owning households in the U.S. owns an RV.



THE WINNERS –

Green Country Farm Bureau leaders were on hand to recognize the Stierwalt Contract Cattle and Radcliff Ranches team members for capturing the wild cow milking title at the Green Country Classic Ranch Rodeo. Craig, Nowata, Osage, Rogers, Tulsa and

Washington County Farm Bureaus make up the Green Country Farm Bureau partnership that sponsored the event at the rodeo. Farm Bureau leaders pictured, from left, include Washington County’s Nellie Morgan, and Rogers County’s Wanda and E.J. Snider and Angela and Dennis Fry. The rodeo team

members, pictured on horseback, include Brad Jackson, Chris Potter, Shane Stierwalt, Lane Stierwalt, Scott Tracy and J.R. Ramey. In addition to other prizes, team members received embroidered Farm Bureau jackets similar to the one pictured.

So why are so many families turning to RVing? Families enjoy the freedom and flexibility of picking up and going where ever and when ever they want to go. Today's RVs are roomier and loaded with options that let families travel with all the comforts of home. RV vacations are "all inclusive," offering families transportation, accommodation, and meals all in one convenient package. Kept packed with essentials, an RV is ready to hit the road at a moment's notice.

According to a study by Louis Harris and Associates, 92 percent of parents who own an RV said that RVs are the best way to travel with children. RV camping vacations provide families with the opportunity to share laughs and make memories around the campfire, and escape the stress of everyday life and focus on family. From towing your boat and heading to the lake, to loading up your all terrain vehicles and heading to the great outdoors, it is bound to be a fun family adventure if you are traveling in an RV!

In a vacation cost comparison study conducted by PKF Consulting, RV camping vacations were rated as being the most affordable for a family trip. On average, an RV vacation costs 50 percent less than driving in the family car and staying in hotels, 70 percent less than flying to a vacation destination and staying in a hotel, and 75 percent less than taking a cruise.

Perhaps the best benefit is that recreational vehicles are not as expensive as people might expect. The lesser expensive RVs are the towable units with prices starting as low as \$3,500 for compact pop-up campers, roomier travel trailers start at \$10,000, and more luxurious fifth-wheels begin at around \$15,000. Motor homes start at about \$48,000.

Financing can be arranged much the same as for a vehicle or boat, and is available through many dealers and financial institutions. As with purchasing a new vehicle, a good rule of thumb is to already have your financing researched and in place, before going shopping.

Farm Bureau Bank offers financing for new or used RVs, boats, personal watercrafts, ATVs, vehicles and motorcycles. It features competitive rates, an easy online application, and quick response times. Call 1-800-492-FARM or visit www.farmbureaubank.com for more information.

Strategies for 2007 college grads

Thousands of college students have left campuses across the country to embark on their careers. According to a survey by the National Association of Colleges and Employers (NACE), the outlook for 2007 graduates is good. The survey indicates employers will hire about 17 percent more graduates from the class of 2007 than they did

from the class of 2006, making this the strongest job market since 2000-2001.

The college class of 2007 also can expect to make more money - \$40,166 median salary - compared to their counterparts with two-year associate's degrees (\$30,937 median salary) or those with high school diplomas (\$21,079 median salary).

AUGUST MEMBER'S ONLY COUPON!

Sale Price Expires August 31st

WOLVERINE
Just
ARIAT
CAT

To Receive FARM BUREAU Only Sale Prices, You Must Show Atwoods' Cashier a Current Membership Card Prior to Sale.



END, WOODWARD
ELK CITY, CLINTON
SHAWNEE, SAPULPA
NORMAN, STILLWATER,
VINITA, SAND SPRINGS

ATWOODS

Ranch ★ Home

CLAREMORE, POTEAU,
BARTLESVILLE, ALTUS,
MCALISTER, LAWTON,
OWASSO, CHICKASHA,
BROKEN ARROW

Ambush, Inc.

Used Off Road 4x4 Mini Trucks

Great for Farm & Ranch, Hunting, Construction & Job Sites, Etc.
Save Hundreds; Even Thousands Over Comparable ATVs

Prices Start At

\$4,000

405-200-6339

Seminole, OK
Brian & Cindy Sims



A TOP AWARD –

Payne County Farm Bureau was presented the Payne County Agribusiness of the Year Award by the Stillwater Chamber of Commerce Agribusiness Committee at the Rural Urban Appreciation dinner held at the Payne County Fairgrounds. Ryan Luter, of Banc First and Chamber Agriculture Committee Chairman, presented the award to Payne County Farm Bureau President Gene VanCoevering, right. Luter cited the overall activities of Payne County Farm Bureau, the YF&R and the Women's Committee as being of significant benefit to the citizens of Payne County.



Mr. Angus Award –

John and Gaye Pfeiffer of Mulhall, right, received the Mr. Angus Award at the 2007 Oklahoma Angus Association Annual Meeting & Banquet in Stillwater. John is vice president of Logan County Farm Bureau while Gaye serves on the Women's Committee. Keith Grissom presented the award.

But even with a starting salary that looks pretty good, some college grads will struggle financially. Deductions for benefits and taxes take a bite out of the paycheck, and paying for rent, car payments and insurance, plus student loans, will take careful planning. Sooner, rather than later, is the right time to develop a financial strategy that can help a recent grad meet his or her financial goals.

Kiplinger.com says a new grad's ideal



budget would involve no more than 30 percent of take-home pay going for rent. Other housing expenses - including renter's insurance, should take about 10 percent. Transportation - including a car payment - should be about 10 percent, and car insurance and other expenses about 5 percent. With 10 percent going to pay down student loans and 10 percent to savings, 15 percent for food (both eating in and eating out), that leaves

Finished in the classroom? The outlook for 2007 college grads is good, but some will struggle financially. Farm Bureau can help.

10 percent for clothing and entertainment.

Insurance is an important consideration for grads, and auto and homeowners or renter's insurance are essentials. Although the new grad's home or apartment may be furnished with low-cost pieces, just the expense of replacing that new business wardrobe could be way more than a starting salary could afford.

Life insurance is another important consideration. Although many employers provide some life insurance as a benefit of employment, that insurance goes away when an employee leaves the company. And in today's marketplace, employees tend to change jobs often. With that in mind, it's a good idea to think about some permanent life insurance, especially if there is a spouse or child to consider. And it's important to know that buying life insurance at a younger age

usually means a lower premium compared to buying it 10 or 20 years later.

Many grads have significant student loans. Consolidating those loans may be advantageous – it can stretch the repayment period to longer than the standard 10 years and reduce your incremental payments.

For new grads, there's a whole new world of opportunity waiting, and a local Farm Bureau agent can help you find the path you want to travel. Call your county Farm Bureau office or log on to okfarminsurance.com to locate an agent near you for more information.

Through an exclusive, multi-state agent force, the companies affiliated with the Farm Bureau Financial Services brand underwrite, market and distribute a broad range of financial services products, including life insurance, investments, annuities, property-casualty insurance products and services, and more to individuals and small businesses within a marketing territory that includes 15 states.



WESTCHESTER
Foundation
Repair

We Save You Time & Money
The System That Works
Residential & Commercial

- No stress on your surface structure during installation
- No site preparation
- One day service on most homes
- Foundation repair
- Wood floor and slab leveling
- New construction plans
- French drains
- Retaining and basement walls

800-833-7437
www.westchesterfoundation.com

Family Owned & Operated Since 1977
Bonded & Insured for Your Protection

Ask about our Transferable Lifetime Plus Warranty
90 Days Same As Cash!
References available upon request
Free estimates to Homeowners

**DOES YOUR BASEMENT
or CELLAR LEAK?**

NO EXCAVATING

CALL THE OLD CELLAR MAN NOW!

1-800-215-0537

Check out the
**'08 Ford
Superduty**



New Over Model

**RANCH HAND
GRILL GUARDS**

**RANCH HAND
TRUCK ACCESSORIES**

**CPL
TOOLBOXES**



OSBORN
PICKUP ACCESSORIES
Tuttle, OK
405-381-4491
www.osbornpickup.com
An Oklahoma farmer owned business

Home Security

Right now only Oklahoma Farm Bureau members can receive a home security system installed at no charge *plus \$200* to use toward the purchase of any additional equipment. System includes control panel, key pad, 2 door sensors, motion detector, siren, yard signs and full service warranty. Monitoring is required. The fee is \$24.95 per month.

TOTAL SECURITY CENTER
866-321-4177
www.tssecurity.com



**Introducing Our New
Digital
Internet Video
Security System**

- Remote or local security monitoring from any PC via the Internet.
- Includes Dell Dimension computer and four color cameras.

Now Only \$1,475 Installed!

Country Classifieds

AUTOMOTIVE

'51 Buick 8, straight 8, 53,000 miles, garage kept. I have all service records, even bill of sale. Marietta, 580-276-2606.
'96 Ford Taurus GL, excellent condition, needs transmission work, \$1,000; '77 Dodge pickup, all original. 360 Auto, Shawnee, 405-275-0378.

'89 Chevrolet 1/2-ton 4-wheel-drive pickup, burns propane and gas, 4 new tires, 2 tool boxes, runs good. J.T. Hurst, 580-782-5018.

'01 Lincoln Towncar Executive series, silver metallic, gray leather, clean interior, \$7,500 OBO. 918-618-2088.

'68 Chevrolet convertible, sharp, \$8,500; '50 Ford coupe, nice, \$10,000; '78 Ford pickup, show winner, \$8,500. Spiro, 918-962-2064.

'79 Lincoln Mark V, Cartier edition, 38,750 original miles, new top, factory C.B., \$5,000. 918-843-0039, 473-0626.

Used natural gas-powered cars and trucks. Drive for 94¢ per gallon. Gocng.com, Russ Casey, 918-733-4887.

'05 Yamaha dirt bike, 80 model, runs great. 918-964-1581.

'99 Ford F250, 7.3 diesel V8, 2wd, 58,000 miles, excellent condition, \$18,795. 405-381-2722, 249-8238.

'03 Honda Rancher 4-wheeler, 350 TM, adult ridden, garage kept, very clean, one owner, \$3,350. 405-238-6958.

'04 handicapped van – Dodge Caravan, ramp van lowers automatically, 22,000 miles, like new, \$28,500. For information, call 405-381-2154.

'62 Chevy 2-door hardtop, needs restoration, not running, \$4,800 firm; 30x50 building, bolt-up, clear span, 26 guage and 14 guage, \$7,800. 405-672-0048.

'48 sedan delivery, 350 engine & trans., good driver, \$7,000 firm; '48 Plymouth 3 pass. coupe, front end has Nova clip, 350 engine & trans., good project car, and others. 918-847-2191.

'79 IH Scout Traveler, always starts, no oil leaks, V8, 4x4, Rhino liner inside/lower half outside, built like a tank, great for hunting or heavy terrain, \$700. Oklahoma City, 405-751-0933.

'95 GMC White, clean, needs overhaul, 435 Cat 10-speed, \$5,000; '02 Kia, new tires, low mileage, air, 5-speed, \$3,800; '52 Chevy 5-window, started restoration, original motor, \$4,000. 580-563-9470.

'81 Ford F350, steel flat bed, 46K actual miles, needs work, rigged for welding. 405-398-4450.

'69 Chevy with 14-foot flat bed dump, 350 engine, \$2,000. 405-391-3688.

'02 Chevy crew cab dually 4x4, 1-ton, white, diesel, Allison transmission, leather, loaded, one-owner, 67,000 miles, excellent condition. Anadarko, 405-933-2007.

'91 Pontiac Grand Prix 2-door, all or part, has '92 V-6 motor and transmission, 61,000 original miles. 918-227-2428.

'88 Mercury Topaz, runs and drives good, \$1,500 OBO;

'84 Clemnt 40-foot rock trailer, belly dump, single door, good condition, \$12,500 OBO. 405-449-3479.

'69 custom 2 1/2-ton Chevy truck, steel floor and bed, tires real good, hydraulic lift, 48,329 miles, farm owned, nice leather seats, shedded. 580-849-2161.

'96 Mercedes S320, motor runs, excellent condition, beautiful car, needs A/C and transmission repair, \$6,000. 918-683-0301.

One-owner '78 Ford LTD, needs some work, kept inside., \$450. 405-282-4919.

FARM EQUIPMENT

SPIDEL WEED WIPER. #1 Herbicide applicator

for weed control. All sizes available. Recovers in stock. ATV mounting bracket, Quality carts and Peacock foam marker. www.acrsales.com or 1-800-544-1546 or 405-321-7843.

New Holland 456 mower with 7-foot sickle in good condition, \$350. 918-723-4603.

Water well drilling equipment by Hydra Drill, manuf. Deep Rock, includes drill, 6 drill bits, 150+ feet of casing, how to do it yourself video, value \$3,000, sell for \$1,250. 918-342-2520.

New John Deere 348 baler, square wire-tie, heavy-duty driveline, hydraulic bale tension. 918-464-2346.

IHC Farmall 186, hydro, burned, 500 hours on hydro rebuild, will part out; 36-foot Fruehauf oilfield float; 48-foot hotshot float, good condition, vacuum hydraulic. 918-967-8435.

Two fully automatic, fully complete Natureform 1,000-egg incubators, top working order. 405-257-9900.

'48 LA Case tractor, factory propane, good rubber, good paint, runs good, been shedded, \$1,200. 580-726-2389, 530-0228.

'41 John Deere model A, restored, new rubber and paint, F.S. start, \$3,500; '48 McCormick Deering, S-9 gas, restored, new rubber and paint, \$3,000. 405-642-8910, 282-3416.

32x8 enclosed stock trailer; 32-foot bumper pull flat metal bed trailer; sheet metal; receiver hitches; heavy-duty bumpers. Sayre, 580-928-3772.

18-foot single axle stock trailer with enclosed nose and tack compartment, \$2,650. 580-678-4518.

Want to buy 6-foot tandem 3-point disk. 918-723-4603.

Super C, new paint, 2-point, NF, \$2,250 OBO; C Farmall, new paint, 2-point, NF, \$1,650 OBO; C Farmall, new paint, NF, \$1,400 OBO; C Farmall, new paint, new tires, 3-point, \$1,700 OBO; 340 Farmall, new tires, WF, \$2,500 OBO. 918-352-2966.

FMC one-row sweet corn picker, \$2,000. 405-642-8077 or 872-3067 after 9 p.m.

Antique horse drawn farm equipment, 2 cream separators, '57 Farmall 460 tractor, 4-bottom plow, '49 Chevrolet truck. 405-282-2669.

'00 Chevy farm truck 3/4-ton, 4x4, 5.7L, loaded, 1-owner, garaged, tow pkg., new battery/shocks/tires/alt., only 32k miles, \$13,500. 918-367-1955.

L-2 Gleaner combine motor. 580-370-0457.

10-foot HD angle blade, hydraulic tilt/angle adjustment, fits tractors with category 2 or 3 hitch, \$1,250. 405-850-1005.

LIVESTOCK

Reg. Beefmaster bulls, cows, show heifers, great pedigree bloodlines, many are polled, red, dunn, black. You can see them at doubledeucebeefmaster.com. 918-253-8680.

Starter pullets, ready in September. For more information, call 405-944-5940.

2-year-old male donkey. You pick up for \$75. 405-596-4512.

Beefmaster bulls, females – developed on forage, bred for six essentials, foundation genetics, practical cattle with proven performance. Simon Creek Beefmasters, 580-668-2523.

Homozygous black and polled, low birth weight Limousin bulls. Excellent EPDs, great disposition, very muscular, and will make your calves black and polled. 580-564-6288, 405-250-9909.

10 Boer goats, red headed does, \$1,500 cash only. Henryetta, 918-652-2860.

Serviceable age bulls – Angus, black polled Limousin,

Maine. Will F.T. Used farm machinery. Call for list, leave message, 405-381-4307.

Purebred Limousin bull, red, polled, AI sired, bred for calving ease, fast growth, 14 months old, 1,200 lbs. plus, breeding cows, \$1,200 firm. 405-614-3332.

Limousin bulls. 918-465-3835 after 5 p.m., or 465-6890.

5-year-old registered Quarter Horse mare, OK Star and Pepson breeding, very smart, gentle, granddaughter has lots of trophies. 580-286-3985.

Registered Polled Hereford bulls, 17 months to 2 years, Remital Online 122L, PW Victor Boomer P606 genetics. Breeding Polled Herefords 40 years. 580-332-2468.

Registered Limousin bulls, heifers. Black, some homozygous, red, polled, gentle, growthy, excellent quality, service age. Hayhook Limousin, 405-527-7648, 306-5202.

Registered Limousin bulls, heifers. Black polled, top AI genetics, calving ease, gentle. Wildhorse Valley, 405-279-3398, 408-6166.

15-month-old Polled Hereford bull, sired by Felton's Legend, vaccinations current, vet checked, fertility tested, \$1,200. 918-277-9140.

Quality registered Black Angus bulls – all wormed, vaccinated, fertility tested, good disposition. 4B Ranch & Cattle, LLC, 918-775-3062.

3-year-old registered gray and white Paint gelding, out of TB mare and running Paint, asking \$500 OBO. 580-678-4518.

Registered Paints – 3-year-old, yearling, weanlings. Flashy and solids, fillies and colts, great lineage, great looks and dispositions. 405-262-8499.

2 mules, pack and ride, have been used for hunting, will trade for beef calves. 918-782-9904.

Double Tough Harlan, linebred Harlan buckskin stallion at stud, \$400 LFG; mares in foal and linebred Harlan colts for sale. 918-762-3769, kbarger@cowboy.net

Black Simmental bulls, a few show heifers, Myers 734 True Dream breeding, \$800 to \$2,500. 580-258-0080.

Registered homozygous breeding age black Limousin bulls. 580-868-2256.

Maine show steer, heifer prospects from winning AI genetics such as Heat Wave, Ali, Sin City, Dr. Who, Mossy Oak, 20 years of developing our genetic base. Brower Land & Cattle, 405-933-2007.

Polled purebred Charolais bulls, breeding Charolais since '63, \$1,200 choice. Red polled Salers bulls. Red Rock, 580-723-4230.

Aged bay gelding, 14 hands, \$300; 7-year-old App gelding, 16 hands, \$700; double pole and double black purebred Limousin bull, born 8-25-99, \$1,200. 405-258-0449.

MISCELLANEOUS

APPRAISAL CAREER OPPORTUNITY.

Many of our part-time livestock and farm equipment appraisers earn \$20,000-\$30,000/yr. We have full-time appraisers earning over \$100,000/yr. For information about becoming a certified livestock or farm equipment appraiser call (800) 488-7570 or visit www.amagappraisers.com

TURTLE & BREAM Traps. Traps that really work. Free Brochure. Smith Mfg., 5896 Nuthatcher Rd., Gilmer, TX 75645 smithmfg@aol.com

Meat Grinders, Cubers, Butcher Supplies, Catalog \$2.00. Home Processor, 4501 Ledan Rd. Ext., Gainsville, GA. 30506, 770-535-7381, www.HomeProcessor.Com

SUSPENDERS WITH PATENTED "No-Slip Clip."

Free Catalog: 800-700-4515, www.suspenders.com

Compare our prices before you buy. Carver Monuments. 405-932-4398.

Solid wood dining table w/4 chairs, 1 extension leaf, very sturdy, \$125. 405-381-4175.

Pond sealer – granular bentonite for sealing leaking ponds, bags or bulk. Seminole, 405-382-1973.

Star Bicycle Ride No. 7 – 4 routes, 8, 25, 53 & 68; proceeds to MS Research through OMRF. Kids ride free on 8-mile route, others \$20. starride.info

Are you receiving small monthly payments on a note or settlement? Would you like a large lump sum now? Free quotes. 405-598-8484.

Only preservative-free skin care products on market. Business builders needed, 80% have results with first use. 580-326-5726, hydratedskin.com, mannapages.com/C5

Electric mobility Rascal scooter and lift 235, new batteries; cost over \$5,000 will take \$2,000. 918-543-2662, 637-8325.

Installing cement storm shelters (government approved), septic tanks and lines, oilfield and farm work. Snuffly Nevels Backhoe Service, 580-582-6263.

Stanley home products, Fuller Brush. All house cleaning, personal, brushes, brooms, mops, combs, air fresheners, degreasers, kettle cleaners. 580-497-2249.

New England grandfather clock, \$2,000; wood table with white legs, 4 chairs, \$250. 580-889-6595.

Antique GE stove, 220-volt, '50-'60s era, great condition, \$350. 580-484-4650.

Like new, four 15-inch tires, raised white letter Firehawk Indy 500 FWL P255/70R15, 55,000-mile warranty (have receipts), Hibdon tires, \$400. 405-632-1543.

48-inch LeClerc weaving loom, floor model, \$400 OBO. 918-696-6434.

American Indian items. 405-454-3420.

Safe rooms – above ground only, exceed FEMA specs. 918-629-2707.

3,600 feet 2 7/8 pipe; 1,500 feet 2 3/8 pipe; 200 3/4 sucker rods; 1 1/4 fiberglass posts for hi-tensile electric, cut to length. 405-627-3920.

Sioux Valley face grinding machine (hard seat grinder in perfect condition) complete with cabinet and tools. 918-352-3063.

Minerals for lease in Kingfisher County, section 33-19 N range 9/w or sw/4 section 32 19 N, range 9 west. 405-853-6184, leave message.

Attention – team expanding locally, looking for serious partners who want their own legitimate home business. Free website and training; no selling; amazing support, no risk. biz4home.biz

Crochet family name, Christmas, birthday, friend, any occasion, \$3 per letter. 580-563-9470.

Pay off your 30-year mortgage without increasing your payments, proven method, 98 percent retention. 405-474-2181.

Awards, custom T-shirts, trophies, custom engraved plaques. 405-624-8393 or visit awardsandmoore.com

Patriotic 3x5 U.S., Oklahoma poly outdoor flags. \$8 postpaid at Ray Cobb, RR 2, Box 67, Konawa 74849. 580-925-2443.

Wooden pop cases, different brands, approximately 400, price negotiable, large amounts for less. 405-542-3223 (24-7).

Briggs & Stratton push lawn mower with bag, \$65; AKC white German Shepherd female. 405-395-8485, 878-6697.

Internet/e-commerce – own your own business and build residual income using the Internet. 1-888-235-5436 or kmosley.com

Are you looking for more than just a job? Free website support and training. For information, visit workathomeunited.com/anita

Kiln model K by WP Dawson, Inc., Brea, Calif., 220-volt, 50-amp, good condition, make offer. 918-335-1450, 440-6448.

Four burial spaces at Sunset Memorial Gardens in Garden of the Good Shepherd, valued at \$4,000. Make best offer. 405-344-6866, 722-4733.

Semi trailer for storage. Delivery available. 405-358-6559.

Green, small square alfalfa, alfalfa oats mix, oats, Bermuda grass hay. 580-544-4474.

PETS

AKC English Bulldog puppies and stud service. Check quality of pups and stud at cowboybulldogs.com. 918-967-4590.

Bernese Mountain Dog puppies, very good family pets, adults weigh between 80 and 100 lbs., \$800. 918-482-3054, 497-0165.

Rat Terrier pups, excellent for keeping rodents and snakes under control, inside or outside, great companions. 405-391-2662.

2 Australian Kelpies females, 2 years old, all shots,

3-year rabies shot, wormed, 918-232-4284.

AKC registered Dachshunds for pet or show – and occasionally a retired champion – puppies available. goluckydachshunds.com

AKC, ACA Maltese baby face puppies, wormed, shots, home raised, perfect pet, great stress reliever. 580-298-5367.

Toy Fox Terrier pups, UKC, \$200 s/w; Pembroke Welsh Corgi pups, AKC, \$300 s/w. 580-363-4676, 716-0907 cell.

Three female choice Jack Russell Terrier pups, ready to go, all shots, wormed and tail and dewclaws done. Will have a litter in mid July and mid August. 918-374-2456. Full blood ACA Bloodhounds, 1 male, 2 females; 3 kennel pens. 918-696-5819.

Parrot cage, 48x36x36, mfg. Prevuec Hendryx, \$150; also large parakeet cage, brand new, \$90. Cash only. One mile off Highway 412. 918-543-8447.

REAL ESTATE

80 acres of creek bottom land with improved pasture and 4-bedroom, 2 1/2-bath custom built home plus 200 pecan trees and equipment, 4 barns, pipe corrals, 3 ponds, all in Checotah city limits, \$375,000. 918-232-3700. 190 acres in Adair County, approximately 145 acres in pasture, 4 ponds, fenced, \$250,000. Beverly Cochran Real Estate, 918-458-5888.

3-bedroom, 2-bath house totally remodeled with vinyl siding, stained doors and trim, new room, CHA, whole house fan, located in Okemah, \$57,500. 918-224-5183.

Enjoy country living – acreages from 1.25 to 10 acres, east, northeast, southeast of Oklahoma City, owner finance. Milburn O/A, 405-275-1695, 202-3257.

An experienced Oklahoma company purchasing owner-financed mortgages, contracts for deed, structured settlements. Sterling, 800-490-2986.

5 acres, fenced, 2-bedroom, 2-bath, 2-car garage, '04 granite tops, Jetta tub, tile floors, all brick, FP. Red Oak, 405-899-7919.

Scenic 5 acres, 2,700 sq.ft. 4-bedroom, 2 1/2-bath, 2 living areas, 2 fireplaces, cellar, optional 10 acres, secluded, beautiful, 20 minutes to OKC-Norman, Blanchard schools, nice updated interior, \$238,500. 405-485-8758 or 640-0805.

160 acres recreational, hunting land, 12 miles NE of Clayton, \$165,000. 580-223-3662.

Anadarko 4-bedroom, 1 3/4-bath, 2-story, 2 heat pumps, metal roof, remodeled, fenced backyard w/cellar,

Country Classifieds
2501 N. Stiles • Oklahoma City, OK 73105

Each Farm Bureau member family is limited to ONE free classified ad per issue. This form must be used. No call-in ads will be accepted. The length of the ad can not exceed the number of lines on this form. Ads run only one time.

All information below must be completed.

Please type or print legibly.

Name _____
OFB Membership Number _____
Address _____
City _____ State _____ Zip _____
Phone (_____) _____
Area Code

Deadline for the next issue is September 15, 2006.

Country Kitchen

LONDON BROIL WITH ROASTED CORN – Serves 4



- 2 to 2 1/2 lb. Certified Angus Beef® top round steak, cut 1 to 1 1/2 inches thick
- 8 ears corn on the cob
- 2 tablespoons butter or margarine
- 1/4 teaspoon salt
- 1/4 teaspoon pepper



Marinade

- 1/3 cup olive oil
- 1/3 cup lemon juice
- 2 cloves garlic, crushed
- 1/4 teaspoon salt
- 1/4 teaspoon pepper

Place steak in zipper locking plastic bag. Combine marinade ingredients and pour over steak. Remove all air from bag. Refrigerate and marinate 6 to 8 hours, turning frequently.

Remove husks from corn and scrub with a brush to remove silk. Melt butter; stir in salt and pepper. Brush corn with mixture. Wrap each ear of corn securely in heavy foil.

- Remove meat from marinade; reserve marinade. Place corn and beef on preheated grill over moderately hot heat about 4 to 5 inches from heat source. Grill corn for 20 minutes, turning frequently. Grill steak about 10 minutes per side for medium rare, basting frequently with marinade. Serve steak and corn hot.

SPICY GRILLED CHOPS – Serves 4



- 4 boneless pork chops, 3/4-inch thick
- 1/4 cup thick and chunky hot salsa
- 2 tablespoons water
- 2 tablespoons orange marmalade
- 1/4 teaspoon seasoned salt



In small bowl, combine salsa, water, marmalade and seasoned salt; blend well. Place pork chops in a self-sealing plastic bag and add marinade; seal bag and refrigerate for one hour. Prepare medium-hot fire in grill; remove chops from marinade (discarding any remaining marinade) and place directly over fire. Grill for about 4 minutes per side. Serve chops hot from grill.

\$77,000. 405-247-3921, 426-9501.

870 acres, home, barns, corrals, 150-cow/calf, lake frontage, close to town, \$1.1 million. Good Earth Land Co., 918-689-3166.

Eufaula lakefronts, lake view and interior lots, financing available. Visit affordablelakeproperty.com or call 918-689-7477.

Brick home in Verden – 3 bedrooms, 2 bathrooms, 2 living areas plus sun room, fireplace, large kitchen, basement, double garage, additional brick smaller house on property which could be rented or used for storage. 405-453-7523.

5 acres with 4-bedroom, 2-bath home with large living room, fireplace, kitchen, dining room, large laundry room, storm cellar, 2-car garage, large back yard in El Reno. 405-422-3072.

Hunting lease – prime Jefferson County, 2,020 acres, \$8 to \$10 per acre. 580-313-0042 after 7 p.m.

Sell or trade 24 acres more or less – will trade for waterfront property, land 8 miles SE of Seminole. 405-642-1716.

RVs, MOBILE HOMES

'00 Starcraft 8-foot self contained slide-in camper, full bathroom, queen bed, heat, AC, excellent condition, \$5,700. 405-454-2662.

'85 ForeTravel diesel pusher, 33-foot, 2 air, 7 KW Onan generator, new Michelin tires, excellent condition, Allison auto transmission, 57,000 miles. 918-247-6982.

'02 Champion doublewide 28x80, 5-bedroom, 3-bath, Jacuzzi tub, rock fireplace, appliances, to be moved, \$57,000. 918-396-3671, 277-3629.

'76 Chevrolet motor home, 21-foot, 350 engine, really nice, garage kept, 43,000 miles. 918-652-9251.

'72 Town & Country mobile home, 3 bedrooms, 2 baths, \$5,000. Tuttle, 405-381-3694, 990-4107.

5th wheel RBW slide-in hitch, 12,000 lbs. GVW, \$175. 405-410-8881.

WANTED

I BUY BLACKSMITHING TOOLS AND EQUIPMENT. MIKE GEORGE, 1227 4TH ST., ALVA, OK 73717, 580-327-5235.

WANTED OLDER VEHICLES, CARS, PICKUPS, VANS, WAGONS, 1900s THRU 1960s, GAS PUMPS, TAGS. 580-658-3739.

Want to buy good, clean John Deere model 8300 double disc grain drill in field ready condition. Cell, 405-990-5679.

Collector paying cash for antique fishing lures and tackle; also wood duck decoys. Troy, 1-800-287-3057.

I buy guns, new and used handguns and rifles. Terry's Gun & Pawn, 107 W. Cleveland, Guthrie 73044. 405-260-1660.

Want used 5-foot panel fencing; single wooden saddle rack. 918-343-6198.

Want cultivator for an "A" Farmall tractor, needs to be complete. 918-827-6491.

Collector wants old Case tractors – 400, 500, 00, 700, 800, 900, 1200 and others. Call toll free, 888-508-2431.

OKLAHOMA FARM BUREAU MUTUAL INSURANCE COMPANY HAS A NEW CLAIMS HOTLINE!!!



**It is available 24 hours a day, 7 days a week!
If you have a new claim to report, call**

**1-877-OFB-CLAIM
or 1-877-632-2524**

**We will *always* be available to record your
loss information as *quickly* as possible!
The new claims hot line can be used to
report any new claim under any policy you
have with us *except* crop, life, health, or
disability long term care.**

www.okfarminsurance.com

Conserve Energy With Alcoa Siding

***CUT FUEL COSTS! *CUT HEATING COSTS! *CUT COOLING COSTS!**

Alcoa Steel & Vinyl Siding America's At Home With Alcoa

Yes! Energy savings over a short period will more than pay for the new siding investment in your home.

Does not absorb or retain moisture like wood.

Does not support combustion.



Stays beautiful wherever you live!

Retains beauty year in, year out.



Does not peel, flake, corrode or rust. Easy to clean—simply hose down.

Mar's scars, abrasions don't show. High impact-resistant.

White & 12 decorator colors. Never needs paint—durability built in not painted on.

- Insulates against cold or heat.
- Goes up easily over wood, asbestos, stucco or masonry walls.
- Protect your investment in your home! Improve its value!
- Muffles outside noises, assures a quieter, more livable home.
- Permanently protects & beautifies your home.
- Resists damaging effects of acids, salt, water, sun, rain, oil, etc.
- Maintenance free -- the BEST buy in today's home covering market!
- Completely covers split, warped, faded or peeled outside walls.

Here are the names of just a few of our Farm Bureau neighbors who are enjoying the beauty & comfort of Alcoa Siding products. Feel free to check with them.

Benny Rogers P.O. Box 283 Perry, OK	Forest Masten 317 W. Steadman Arapahoe, OK	Steve Lack 116 S. Ryan Calumet, OK	Al Castro 401 Monera Circle Hemlock, OK	Stirling Miller 312 Kansas Chickasha, OK	Cade Boegge Rt. 1, Box 7 Covington, OK	Keller Best 820 W. McArthur Oklahoma City, OK	Willie Clay 1845 N.W. 22nd Muscogee, OK	Reese Winath 5400 NW 65th Oklahoma City, OK
Bob Foley Rt. 2, Box 114 Perry, OK	Beryl Jones 4612 W. Ardson Yukon, OK	Jerry Bonds 28155 Gregory Rd El Reno, OK	Don Main 308 E. Juvon Muskogee City, OK	Mershel Nichols Route 1 Pogue, OK	Randy Ward 1071 Garden Ridge Edmond, OK	Larry Smith Rt. 2, Box 100 Kingfisher, OK	Ben Jantz Rt. 3 Erd, OK	Mark Kelley 3421 NW 67th Oklahoma City, OK
Carl Mitham 10404 NW 37th Yukon, OK	Unique Coffey 2909 N.W. 49th Oklahoma City, OK	Clark Graham 213 N.W. 1st Moore, OK	Kenneth Arlin P.O. Box 521 Seminole, OK	Jerry Meyers P.O. Box 208 Cashcot, OK	S & J Tire Co. Rt. 51 El Reno, OK	Mickey Brown 1725 Country Club Norman, OK	Gwen Faust 3022 Lyric Lane Muskogee City, OK	Richard Bowen Rt. 1, Box 151 Greer, OK
Don Rainwater 5770 Willow Dr. Norman, OK	Louis Simon P.O. Box 160 Singer, OK	Carl McKinney P.O. Box 222 Eufaula, OK	David McDowell 14714 Key Ridge Dr. Newalla, OK	Charles Frank 1830 Brook Hollow Ct. Stillwater, OK	Rae Prokenton 7527 N.W. 40th Oklahoma City, OK	North Construction Lot 4 Mill Turkey Hollow Stillwater, OK	Veres Zuz Muller Rt. 4 Okarche, OK	Dwayne Smith 416 S.W. 10th Muscogee, OK
Neil Roberts 1400 Charles Norman, OK	Delores Knapp 114 W. Birch Erd, OK	Greg Biggs 1600 N. Archer Way Dow Creek, OK	Mike Limke 201 Owen Mustang, OK	Lynn Laker 325 W. Jackson Chowch, OK	Leslie Bradford Rt. 3, Box 208 Wattsgo, OK	Jeff Palmer 522 S. 6th Kingfisher, OK	Jim Nichols 4327 Green Pt. Del City, OK	Harley Hintersgraff 8700 Whitehall Ct. Oklahoma City, OK
G.W. Puckett 200 Elm Maysville, OK	Tex Caviness Rt. 1, Box 25 Cherokee, OK	David Garrett 1009 S. Jensen El Reno, OK	Mike Lee Rt. 4, Box 232 Turbo, OK	Jim Younger 1201 Clearview Mustang, OK	Sharon Graham 2821 Bella Vista Muskogee City, OK	Spaulding Miller Rt. 3, Box 1254 Perry, OK	Glenn Vick 2601 N.W. 1 1/2th Oklahoma City, OK	Don Madisson 3435 N. Good Rock Rd Yukon, OK
Edith Hall P.O. Box 107 Stinking, OK	Jack Steele 178 Thompson Arapahoe, OK	Mike Yousey 20502 S.E. 75th Haskell, OK	Larry Yeat 318 N. 3rd Wattsgo, OK	Terecia Richardson P.O. Box 287 Rural, OK	James Bryant 1750 N. Country Club Muscogee, OK	Mike Norris Rt. 1, Box 95 Perry, OK	Terrace Parkman 128 Chickasaw Yukon, OK	Mike Nichols Route 1 Pogue, OK

Check these features

- + No artificial look
- + No warping in summer
- + Won't rot or peel
- + Won't absorb or retain moisture
- + No exposed nails
- + Won't break up in hail
- + Won't dent like aluminum
- + Static electricity attraction free.

Farm Bureau members receive a 33 1/3% discount off nationally-published retail prices. Now in effect for Oklahoma! Call 405-721-2807 or complete coupon below.

NO OBLIGATION!

Buy directly from the company owners - in the siding business since 1937! No middlemen involved. We can beat most any deal. Buy today before costs soar higher!

TERMS AVAILABLE

Special discount for FB Members Only.

NOTICE

Siding materials sold on an applied basis only.

OK! I want more information, facts, figures, estimates and color pictures of completed jobs. No obligation. You be the judge! Send coupon immediately! One of the OWNERS of the company will personally contact you! No high pressure. Just the facts for your consideration! Act NOW! You'll be glad you did!

Name _____

Address _____ City _____

Telephone _____ Best Time To Call: _____ A.M. _____ P.M.

If Rural, Give Directions _____

M. RHODES COMPANY

6408 N. Libby
Oklahoma City, OK 73112