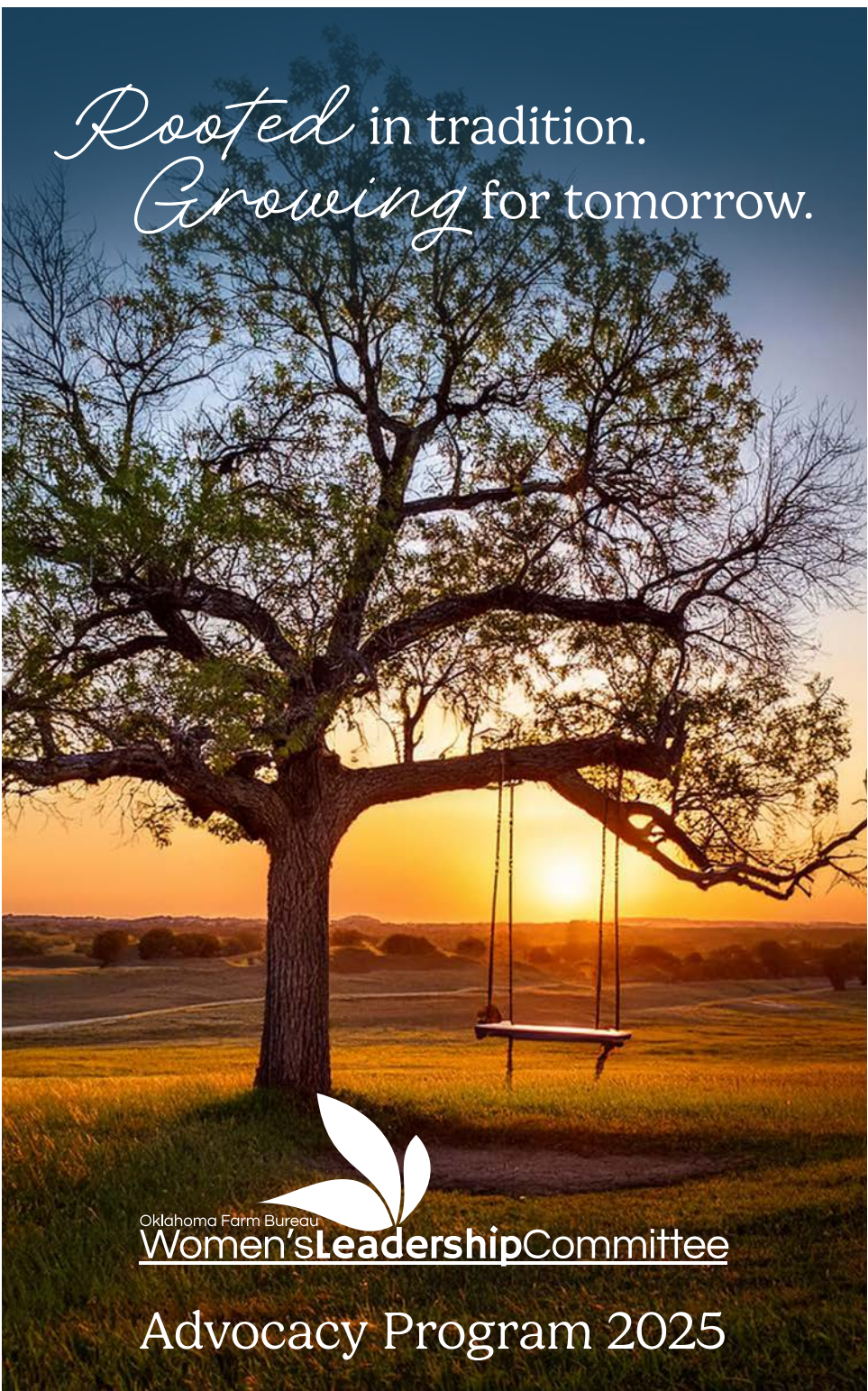


Rooted in tradition.
Growing for tomorrow.



Oklahoma Farm Bureau


Women's Leadership Committee

Advocacy Program 2025

2025 WLC CALENDAR

November 2024

8-10 OKFB Annual Meeting
Omni Hotel, OKC

December 2024

6-7 State WLC Meeting
Hilton Garden Inn, Lawton

January

24-29 AFBF Convention
San Antonio

Ongoing

*Bushels for Books
applications available*

February

17 State WLC Meeting
18 Leadership Conference
17-21 Farm Bureau Week

Ongoing

*Bread Day
(at your convenience)*

March

7-10 AFBF Fusion Conference
Denver
18 National Ag Day
24 State WLC Meeting

April

7-10 Washington, D.C. Summit
15 Oklahoma Youth Leading
Agriculture Application
Deadline
25-26 WLC Conference
Hilton Garden Inn
Lawton
22 Ag Day at the Capitol

May

6-8 Ag Tour
6-7 State FFA Convention
12 Farm City Festival
27-30 Oklahoma Youth Leading
Agriculture

June

10 Bushels for Books due
10-12 On the Road with AITC
23-26 National AITC Conference
Minneapolis
TBD Capitol Camp

July

10 Nurse's Scholarship
deadline
10 State AITC Conference
21-22 State WLC Meeting

August

7 Women in Ag Conference
15 YF&R Shotgun Shoot

Ongoing

August Area Meetings

September

2-5 Read an Accurate
Ag Book Week

Ongoing

*County Resolutions and
Annual Meetings*

October

10 Report of Events deadline
TBD State WLC Meeting
TBD State Resolutions Meeting

Ongoing

*County Resolutions and
Annual Meetings*

2025 OKFB Annual Meeting – Omni Hotel, Oklahoma City; Nov. 7-9

CONTENTS

Letter from the OKFB Women’s Leadership Committee Chair	2
Evaluation of Events Guidelines.....	3
2025 Advocacy Program	4
County Farm Bureau Women’s Day	7
Rural/Urban Event.....	7
OKFB Women’s Leadership Committee Contacts.....	8
Suggested Memorial Service	10
OKFB Safety Services	11
County WLC Grants and Farm & Ranch Families	12
OKFB WLC Awards.....	13
OKFB Staff Directory	14
2025 Calendar.....	16
OKFB District Map	17

She who plants
plants hope.

Letter from the Chair

Dear Ladies,

What an exciting 2025 it will be for our Women's Leadership Committee as we kick off "*Rooted in tradition, growing for tomorrow.*" I am proud of my 46 years rooted with Oklahoma Farm Bureau and am anxious to see the growth we experience together.

As I reflect on our theme, I visualize a beautiful oak tree in our pasture. The tree limbs are of different shapes and sizes, reminding me of the numerous counties we represent. I enjoy watching the leaves develop and change through the seasons, much like each of you in your county women's group.

Opportunities for you and the county committees to advocate for agriculture continue to be provided through our Advocacy Program. I encourage you to incorporate WLC initiatives with your existing community activities.

Each one of you brings the sunshine and nutrition needed for our roots to be strong, healthy and continuously grow.

All the best,

Mignon

STATEMENT OF PURPOSE

The purpose of the Oklahoma Farm Bureau Women's Leadership Committee program is to help promote and activate the entire Farm Bureau program with emphasis on those activities particularly suited to the talents and interests of women.

Evaluation of Events

(Guidelines)

The Advocacy Program Evaluation of Events is a brief record of county Farm Bureau WLC activities for the year. All annual evaluations must be submitted to the state Farm Bureau office by **Oct. 10, 2025**.

All county women's committee members who have completed the Advocacy Program will be honored at a luncheon at the OKFB Annual Meeting. Awards will be determined from the scoring of your evaluation forms. A monetary award will be given to each county who completes all sections of the Advocacy Program.

All Farm Bureau women are invited to attend the Advocacy Program Luncheon at the OKFB Annual Meeting, even if your county does not have an active committee.

To submit your Advocacy Program evaluation form, visit the website at **okfarmbureau.org**, click on the Program tab and then click on Application Center. You can then fill out your form on the provided PDF. You also will be able to attach photos when emailing your PDF to Marcia Irvin at marcia.irvin@okfb.org.

For questions regarding the PDF submission, contact OKFB Senior Director of Women's Leadership Committee and Safety Marcia Irvin at (405) 523-2405 or marcia.irvin@okfb.org.

Be like a tree.

Stay grounded, connect with your roots,
turn over a new leaf, bend before you break,
enjoy your unique natural beauty, and

keep growing.

2025 Advocacy Program

Nov. 1 – Oct. 31
(Suggested Ideas)

** A minimum of one activity in each sub-category is required to qualify for the Advocacy Program Award.*

I. DEVELOPING LEADERS

(1) CONFERENCES.....

- a. State Convention
- b. OKFB Women’s Leadership Committee Conference
- c. August Area Meetings
- d. Other*

(2) COUNTY MEETINGS.....

- a. County Leadership Committee Meetings
- b. Women’s Day (see page 7)
- c. Incorporate Advocacy Program Theme (see cover)
- d. Other*

II. NETWORKING

(1) AWARENESS.....

- a. Fair Booths
- b. Rural-Urban Day
- c. Work convention booth
- d. Other*

(2) SPECIAL PROJECTS.....

- a. AFBF Foundation for Agriculture/White Reinhardt donation
- b. Nurse’s Scholarship Fund donation
- c. Oklahoma Farm Bureau Legal Foundation/Ag Defense Fundraiser/
Oklahoma Farm Bureau Foundation for Agriculture donation
- d. State, regional or local food bank donation/volunteer
- e. Bushels for Books donation
- f. Ronald McDonald House Charities donation

RMHC Tulsa: rmhctulsa.org

RMHC Oklahoma City: rmhc-okc.org

- g. Other*

III. FAMILY

(1) HEALTH.....

- a. Health program speakers
- b. Cultivating Healthy Minds
- c. Blood pressure awareness/check/door prize
- d. Provide health-related items
- e. Health fairs/nutrition/local food drive
- f. Participate in wellness/fitness
- g. Other*

(2) SAFETY.....

- a. State/county safety seminar
- b. OKFB Safety Services Program (page 11)
- c. ATV/UTV Safety Course
- d. Emergency contact lists (online at okfarmbureau.org/women)
- e. Safety door prizes
- f. Other*

(3) SPIRITUAL HERITAGE.....

- a. Devotions and/or prayers at all meetings
- b. Memorial Service
- c. Other*

IV. INFLUENCING THE POLITICAL PROCESS

(1) RESOLUTIONS.....

- a. Attend County Resolutions Meeting
- b. Attend State Resolutions sessions at convention
- c. Delegate to state convention
- d. Submit resolutions to county
- e. Other*

(2) POLITICAL CONTACTS OR MEETINGS

- a. Local, state or federal issues
- b. Environmental issues
- c. Discover, promote or support agriculture friendly candidates
- d. Voter awareness
- e. Conduct citizenship/patriotism/Veterans Day program
- f. Visits to the Capitol (state and/or federal)
- g. Participate in Farm City Festival
- h. Other*

V. COMMUNICATING THE AG STORY

(1) FARM CITY FESTIVAL.....

- a. Donate any amount of money (*REQUIRED)

(2) CONSUMER EDUCATION.....

- a. County Farm City Festival and/or Bread Day
- b. Door Prizes or promotion/Made in Oklahoma
- c. OKFB Ag Tour
- d. Support FCCLA Star Events
- e. Other*

(3) AG IN THE CLASSROOM.....

- a. Host Farm Tours
- b. Participate in Bushels for Books
- c. Read an Accurate Agriculture Book to Students/Class (Sept. 2-5)
- d. Adoption of Classroom/Club (4-H, FFA, etc.)
- e. Sponsor teacher to On the Road with Ag in the Classroom
- f. Submit student names (incoming high school seniors) for OKFB's Oklahoma Youth Leading Agriculture leadership conference in spring (learn more at okfb.news/agyouth)
- g. Support ODAFF Farm to School program
- h. Other*

AG IN THE CLASSROOM RESOURCES

- a. Ag in the Classroom
agclassroom.org
- b. Oklahoma Ag in the Classroom
ok.agclassroom.org
- c. My American Farm
myamericanfarm.org
- d. American Farm Bureau Federation
fb.org
- e. Oklahoma State University Farm to You
humansciences.okstate.edu

**Other under each category indicates there may be a substitution for a listed activity.*

County Farm Bureau Women's Day

Purpose:

The purpose of a county Farm Bureau Women's Day is to promote agriculture and farm family values, implement Farm Bureau goals and build strong networks.

Who to invite:

All women – especially those who have never participated in Farm Bureau activities.

Why:

- To achieve Advocacy Program priorities
 - To encourage action for the year
 - To increase membership involvement
 - To increase OKFB membership
-

Rural-Urban Event

Purpose:

The purpose of a rural-urban event is to inform urban women and men about agriculture and Farm Bureau policy.

Who to invite:

All Farm Bureau members – county officials – especially non-ag-related business women and men.

Why:

- To bridge the gap between rural and urban populations
- To educate the public about ag issues
- To inform about Ag in the Classroom

*Be a voice, not an echo.
Embrace your uniqueness.
Share your ideas and
Make a difference in the world.*

Oklahoma Farm Bureau Women's Leader

DISTRICT ONE

Robin Bryant
210570 E. 680 Rd.
Camargo, OK 73835
Cell: (580) 254-0331
rlb126@hotmail.com

DISTRICT TWO

Jill DeRusha
24230 E. C.R. 1390
Willow, OK 73673
Cell: (580) 675-4565
jillderusha@gmail.com

DISTRICT THREE

Karen Dodson
9009 C.R. 1050
Hydro, OK 73048
Cell: (405) 542-7443
karenkcpa@gmail.com

DISTRICT FOUR

Jacey Fye
102 Apache Dr.
Comanche, OK 73529
Cell: (580) 467-7403
jacey_fye@yahoo.com

DISTRICT FIVE

Cyndi Mackey
PO Box 444
Spiro, OK 74959
Cell: (918) 658-8178
cmackey2697@gmail.com



Oklahoma Farm Bureau
Women's Leader

Senior Director of Women's Committee

Marcia
2501 N
Oklahoma City
(405) 542-7443
Cell: (405) 542-7443
marcia.irvin@okfb.org

Farm Bureau Leadership Committee

DISTRICT SIX

Kelly Blair-Campbell
18591 S. Cary Lane
Tahlequah, OK 74464
Cell: (918) 931-2797
southernkell74@gmail.com

DISTRICT SEVEN

Terry Pederson
33842 C.R. 530
Burlington, OK 73722
Cell: (580) 829-1185
dryprncss@gmail.com

DISTRICT EIGHT

Jan Marie Long
11812 C.R. 1560
Ada, OK 74820
Cell: (580) 399-4771
janmarielong13@gmail.com

DISTRICT NINE

Cindy Schoenecke
990324 S. 3460 Road
Sparks, OK 74869
(918) 866-2525
Cell: (405) 615-2410
donschoenecke@icloud.com

STATE CHAIR

Mignon Bolay
6501 Independence
Perry, OK 73077
Cell: (580) 370-0325
mignon@bolayfarms.com



Leadership Committee

Women's Leadership and Safety

Ma Irvin
Stiles
Perry, OK 73105
323-2405
323-7602
m@okfb.org

Suggested Memorial Service

Let us take this time to pay tribute to our county
Farm Bureau members deceased during the past year.

CALL TO PRAY

If there ever was a time it's now,
For us to take a stand,
To say that we belong to Him,
And pray across this land,

There is a great awakening,
Of the Holy Spirit's pow'r,
Where Jesus is the Lord of all,
And with each passing hour,

The Lord of all the harvest,
Meets us as we go,
Adding to the Church He builds,
All who come to know,

The righteousness and peace and joy,
Of making Jesus King,
For if you want salvation,
Make Him Lord of everything.

Not talkin' 'bout religion,
There is no pow'r in that,
Man-made rules and doctrines,
Those traditions are old hat.

But Bible-based ignition,
Of lives He's set on fire,

Young and old together,
With only one desire,

And that's to lift up Jesus,
So everyone can know,
The wonders of His Kingdom,
And the Spirit's seed to sow.

Swept up in the passion,
Of what the Lord can do,
And many signs and wonders,
And miracles it's true.

So hear the call, my brother,
To seek the Lord and pray,
And God is speaking, sister,
For you to start today,

The great move of the Spirit,
Will not tarry long,
If all the Jesus people,
The ones to Him belong,

Will call upon the Father,
And soon, in Jesus' name,
Driving out the darkness,
For the praises of His fame.

Please remind your county secretaries to submit the names of all
Farm Bureau members deceased during the past year to Marcia Irvin at
marcia.irvin@okfb.org.



Safety Programs

Oklahoma Farm Bureau offers a wide variety of programs including a number of programs that can be presented by county Farm Bureau members.

The following programs can be lead by counties:

- Bicycle Safety
- Farm Safety
- School Bus Safety

The following programs can ONLY be lead by OKFB staff:

- ATV/UTV Safety
- Defensive Driving
- Cattle Handling
- Power Take-off Safety

For scheduling information, contact:

Burton Harmon.....405-205-0074
Chloe Black.....405-596-2236

OKFB WLC Grants

The OKFB WLC is excited to award \$150 grants to all county Women’s Leadership Committees – new and existing – to help fund a project that will achieve a portion of the Advocacy Program. For 2025, the OKFB board of directors will match each grant awarded, increasing the total dollar amount to \$300. Grants are limited to one grant per county each calendar year. Grants will be awarded throughout the year at the sole discretion of the OKFB WLC Grant Committee.

Grant applications may be requested by contacting OKFB Senior Director of WLC and Safety Marcia Irvin at (405) 523-2300 or by email at marcia.irvin@okfb.org. This grant program may be changed or eliminated at any time by a majority vote of the OKFB WLC.

2025 District Farm & Ranch Family Recognition

Recipients of the OKFB WLC’s District Farm and Ranch Family Recognition are chosen based on a county rotation within each district. Contact your district OKFB WLC member for more information.

Recognition recipients will be awarded a sign, a monetary gift and a two-night stay at the OKFB Annual Meeting.

AFBF Annual Meeting Dates & Locations

Jan. 24-29, 2025.....	San Antonio, Texas
Jan. 9-14, 2026	Anaheim, California
Jan. 8-13, 2027	Charlotte, North Carolina
January 2028	Oklahoma City, Oklahoma

OKFB WLC Awards 2024

The following counties have completed the 2024 Women's Leadership Committee Advocacy Program and have received a monetary award:

Alfalfa	McIntosh
Atoka	Major
Caddo	Mayes
Canadian	Muskogee
Cherokee	Noble
Comanche	Nowata
Cotton	Okfuskee
Craig	Okmulgee
Creek	Ottawa
Custer	Payne
Dewey	Pontotoc
Garfield	Rogers
Grant	Seminole
Greer	Sequoyah
Hughes	Stephens
Jefferson	Texas
Kay	Tillman
Kingfisher	Tulsa
LeFlore	Washington
Lincoln	Washita
Love	Woods

To be *rooted* is perhaps the most
important and least *recognized*
need of the human soul.

Oklahoma Farm Bureau Staff Directory

EXECUTIVE

Executive Director

Thad Doyethad.doye@okfb.org • (405) 523-2438

Executive Assistant/Event Coordinator

Brittney Kingbrittney.king@okfb.org • (405) 523-2475

ACCOUNTING

Finance Administrator

Whitney Benderwhitney.bender@okfb.org • (405) 523-2401

Ag Records

Cydnee Love.....cydnee.love@okfb.org • (405) 523-2306

COMMUNICATIONS & PUBLIC RELATIONS

Vice President of Communications & Public Relations

Dustin Mielkedustin.mielke@okfb.org • (405) 530-2640

Assistant Director of Media Relations & Advocacy Communications

Rachel Havensrachel.havens@okfb.org • (405) 523-2346

Communications Specialist

Mickinzi Fergusonmickinzi.ferguson@okfb.org • (405) 523-2343

Publications Specialist

Kate Jacksonkate.jackson@okfb.org • (405) 523-2527

FIELD SERVICES

Director of Field Services & North Central Field Representative

Justin Whitmore.....justin.whitmore@okfb.org • (405) 850-3921

Northeast Field Representative

Alisen Anderson.....alisen.anderson@okfb.org • (918) 961-8621

Northwest Field Representative

Todd Honertodd.honer@okfb.org • (405) 205-0090

South Central Field Representative

Katie Wilkinson.....katie.wilkinson@okfb.org • (580) 421-5225

Southeast Field Representative

Penny Raspotnik-Jones.....penny.raspotnik-jones@okfb.org • (918) 916-3616

Southwest Field Representative

Haley Curtsinger.....haley.curtsinger@okfb.org • (580) 483-5322

Oklahoma Farm Bureau Staff Directory

FOUNDATION & MEMBERSHIP SERVICES

Director of Membership & OKFB Foundation for Agriculture

Holly Carrollholly.carroll@okfb.org • (405) 523-2402

Membership Support & Development

Kelli Beallkelli.beall@okfb.org • (405) 523-2470

PUBLIC POLICY

Senior Director of Public Policy

Kinsey Westwoodkinsey.westwood@okfb.org • (405) 523-2412

Senior Director of Regulatory Affairs &

Director of OKFB Legal Foundation

Marla Peek.....marla.peek@okfb.org • (405) 523-2437

Director of Public Policy

Gage Millimangage.milliman@okfb.org • (918) 559-2208

Assistant Director of Research and Regulatory Affairs

Trace Justisstrace.justiss@okfb.org • (405) 523-2422

RURAL ECONOMIC DEVELOPMENT

Economic Development Coordinator

Amarie Bartelamarie.bartel@okfb.org • (405) 523-2344

Community Information & Engagement Specialist - West

Sadie Heapsadie.heap@okfb.org • (405) 523-2474

Community Information & Engagement Specialist - East

Sidany Hilburnsidany.hilburn@okfb.org • (405) 523-2514

SAFETY & SPECIAL PROJECTS

Senior Director of Women's Leadership Committee & Safety

Marcia Irvinmarcia.irvin@okfb.org • (405) 523-2405

Senior Director of Young Farmers & Ranchers

Burton Harmonburton.harmon@okfb.org • (405) 523-2419

Coordinator of Collegiate, Special Projects & YF&R

Chloe Blackchloe.black@okfb.org • (405) 596-2236

2025 CALENDAR

JANUARY

S	M	T	W	T	F	S
			1	2	3	4
5	6	7	8	9	10	11
12	13	14	15	16	17	18
19	20	21	22	23	24	25
26	27	28	29	30	31	

FEBRUARY

S	M	T	W	T	F	S
						1
2	3	4	5	6	7	8
9	10	11	12	13	14	15
16	17	18	19	20	21	22
23	24	25	26	27	28	

MARCH

S	M	T	W	T	F	S
						1
2	3	4	5	6	7	8
9	10	11	12	13	14	15
16	17	18	19	20	21	22
23	24	25	26	27	28	29
30	31					

APRIL

S	M	T	W	T	F	S
		1	2	3	4	5
6	7	8	9	10	11	12
13	14	15	16	17	18	19
20	21	22	23	24	25	26
27	28	29	30			

MAY

S	M	T	W	T	F	S
				1	2	3
4	5	6	7	8	9	10
11	12	13	14	15	16	17
18	19	20	21	22	23	24
25	26	27	28	29	30	31

JUNE

S	M	T	W	T	F	S
1	2	3	4	5	6	7
8	9	10	11	12	13	14
15	16	17	18	19	20	21
22	23	24	25	26	27	28
29	30					

JULY

S	M	T	W	T	F	S
		1	2	3	4	5
6	7	8	9	10	11	12
13	14	15	16	17	18	19
20	21	22	23	24	25	26
27	28	29	30	31		

AUGUST

S	M	T	W	T	F	S
					1	2
3	4	5	6	7	8	9
10	11	12	13	14	15	16
17	18	19	20	21	22	23
24	25	26	27	28	29	30
31						

SEPTEMBER

S	M	T	W	T	F	S
	1	2	3	4	5	6
7	8	9	10	11	12	13
14	15	16	17	18	19	20
21	22	23	24	25	26	27
28	29	30				

OCTOBER

S	M	T	W	T	F	S
			1	2	3	4
5	6	7	8	9	10	11
12	13	14	15	16	17	18
19	20	21	22	23	24	25
26	27	28	29	30	31	

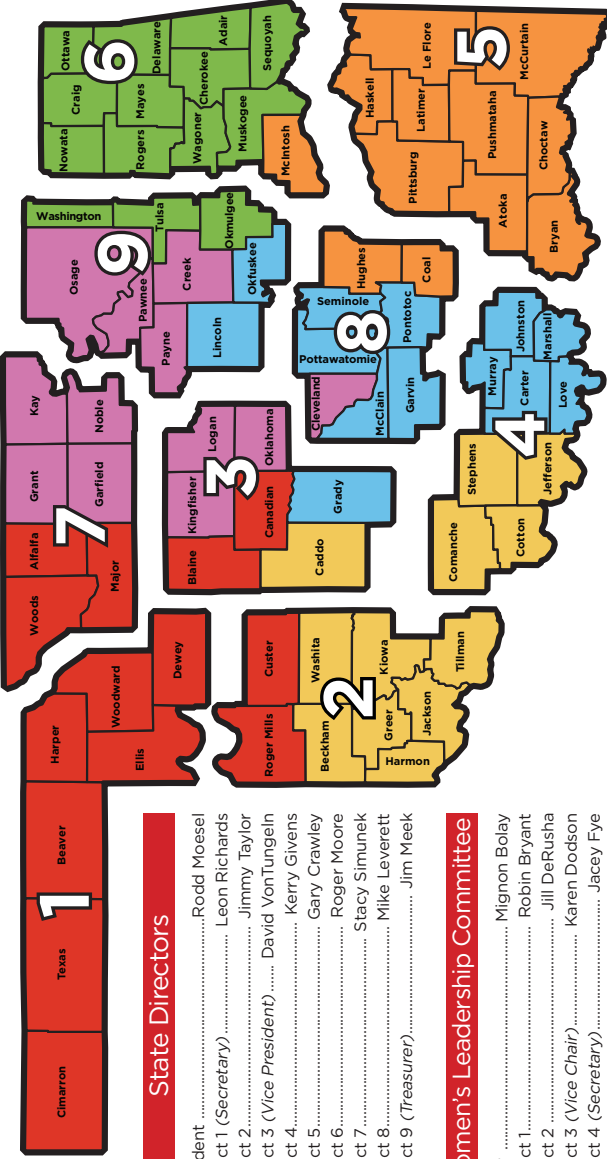
NOVEMBER

S	M	T	W	T	F	S
						1
2	3	4	5	6	7	8
9	10	11	12	13	14	15
16	17	18	19	20	21	22
23	24	25	26	27	28	29
30						

DECEMBER

S	M	T	W	T	F	S
	1	2	3	4	5	6
7	8	9	10	11	12	13
14	15	16	17	18	19	20
21	22	23	24	25	26	27
28	29	30	31			

Effective December 2024



Field Representative Territories

- Northwest: Todd Honer
- Southwest: Haley Curtsinger
- North Central: Justin Whitmore
- South Central: Katie Wilkinson
- Northeast: Alisen Anderson
- Southeast: Penny Raspochnik-Jones

YF&R Committee

- District 1: Katie Richards
- District 2: Lincoln & Gracee Muller
- District 3 (Chair): Jacob & Chastity Beck
- District 4 (Secretary): Ethan & Allison Theis
- District 5: Jake & Jonessa Cantrell
- District 6: Dillon & Katelyn Johnson
- District 7: Garrett Haskins
- District 8: Jaelyn Darling
- District 9: Tim Taylor
- At-Large (Vice Chair): Tommy & Chalayna Salisbury
- Collegiate Representative: Teegin Crosthwait

- State Directors**
- President: Rodd Moesel
 - District 1 (Secretary): Leon Richards
 - District 2: Jimmy Taylor
 - District 3 (Vice President): David VonTungeln
 - District 4: Kerry Givens
 - District 5: Gary Crawley
 - District 6: Roger Moore
 - District 7: Stacy Simunek
 - District 8: Mike Leverett
 - District 9 (Treasurer): Jim Meek

- Women's Leadership Committee**
- Chair: Mignon Boley
 - District 1: Robin Bryant
 - District 2: Jill DeRusha
 - District 3 (Vice Chair): Karen Dodson
 - District 4 (Secretary): Jacey Eye
 - District 5: Cyndi Mackey
 - District 6: Kelly Blair
 - District 7: Terry Pederson
 - District 8: Jan Marie Long
 - District 9: Cindy Schoenecke



Learn *character* from trees,
values from roots,
and *change* from leaves.